



# San Joaquin Sierra

## Hoof Prints



August-September 2013

Issue 4

**San Joaquin Sierra Unit, BCHC**  
**PO Box 25693**  
**Fresno, CA 93729-5693**

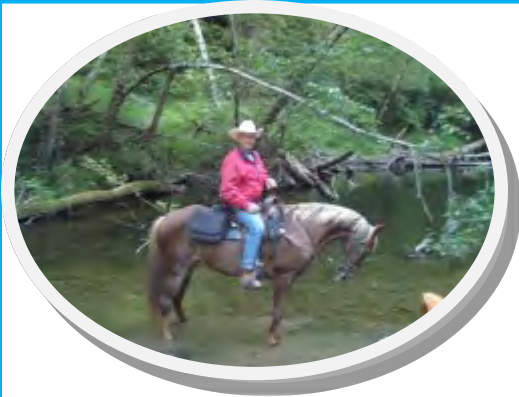
**Email-** [sjsu@bchc.org](mailto:sjsu@bchc.org) (activity info./club contact)  
[membership@bchcalifornia.org](mailto:membership@bchcalifornia.org) (membership email only).  
**On the WEB:** <http://www.BCHC.org> (SJS unit) or  
<http://www.bchcalifornia.org> (State)

**Max & Irene Cochran**  
Newsletter Multiple  
Award Winner

1st - 2004  
1st - 2005  
3rd - 2006  
2nd - 2007  
2nd - 2008  
2nd - 2009  
2nd - 2010  
2nd - 2011  
2nd - 2012



*Concerned Men and Women Dedicated to Gentle Use of California Trails and Backcountry*



### PRESIDENT'S MESSAGE

This Unit never stops to amaze me. Late last year and at the beginning of this year, Joe Kaminski proposed adopting Chamberlain Meadows as a work party project. A few short months later, the meadow has been cleaned of wire, and a newly installed bathroom is standing (see adjacent picture). This project came with a small surprise, grant funding was not available until the last minute, and still Joe and company pulled it off.

Lacking sufficient grant funds to purchase the bathroom the board decided to donate \$1,000 toward the bathroom purchase. Joe teamed our unit up with a local four wheel drive club he belongs to, in order to accomplish this newly desired feat.



Ms. Tara led six of our members over to Jack Brooks Ranch for 5 days of enjoyable riding, including Wanda and myself (July 3 - 8), while Pete took 16 members over to Montana de Oro (July 12 - 14), and Toby and Katie, besides attending both Chamberlain Meadow work parties recently hosted a ride at Tamarack (July 19 -21), and there is still more to come this year.

Tell your friends and family, not only is this Unit promoting and improving the use, care and development of California backcountry trails, we are also listening to what our members are saying.

It is truly an honor to be the president of this Unit,  
Greg Caradonna.

### **In this Issue**

Page 1	President's Message
Page 2	Officers and Coordinators
Page 3	2013 Calendar
Page 4-5	Riding the Big Stump Trail
Page 6-7	Chamberlaine Work Party
Page 7	Shaver Lake Campground
Page 8	Panoramic Point Ride
Page 9	Guarantee Ad for a House
Page 10-11	Chamberlaine Work Party II
Page 12	Tamarack Campout
Page 13	House for Sale
Page 14	Sunshine Corner, Kids Corner, BCHC Items for Sale
Page 15	Montana De Oro
Page 16	Board Meeting Minutes for May
Page 17	Membership Form

## 2013 OFFICERS/ DIRECTORS

### President

Greg Caradonna, 559-351-5190  
gocaradonna@sbcglobal.net

### Vice President

Joe Kaminski, 559-733-9170  
kaminskiclan@gmail.com

### Secretary

Cindy Mueller, 559-283-1174  
chipzipnappy@aol.com

### Treasurer

Pete Parkin 559-871-4500  
ktzpaw@yahoo.com

### DIRECTORS

Term Expires at year end

Ted Fischer, 559-855-8599  
tjfischer3@gmail.com 2013

Carol Kaminski, 559-733-9170  
kaminskiclan@gmail.com 2014

Wanda Caradonna, 559-392-3534  
wandacaradonna@sbcglobal.net  
2014

Cathie Walker, 559-439-8940  
walker1486@comcast.net 2013

Randy Witt, 559-325-7876  
rcca33085@hotmail.com 2013

Fredi Chrisman, 559-876-2416  
2013

Tara Stephenson, 559-977-2766  
tara1stephenson@aol.com 2014

### Past President

John Mikkelsen, 559-289-4911  
jessecowboy@comcast.net

## COORDINATORS

### Membership

Jan Mikkelsen, 559-289-4911  
jessecowboy@comcast.net

### Public Lands Liaison

Joe Kaminski, 559-733-9170  
kaminskiclan@gmail.com

### Publications/Newsletter

Carolyn Witt, 559-325-7876  
cawittbchc@yahoo.com

### Mailing Coordinator

Jan Mikkelsen, 559-289-4911  
jessecowboy@comcast.net

### Education Coordinator

Ted Fischer, 559-855-8599  
tjfischer3@gmail.com

### Ride Coordinator

Tara Stephenson, 559-977-2766  
tara1stephenson@aol.com

### Shaver Lake Camp Host

Wanda Caradonna, 559-392-3534, wandacaradonna@sbcglobal.net  
Char Meier, 559-297-1290  
shaverider@gmail.com

### Sunshine Chair

Rebecca Balistreri, 559-905-3854, beckybala@hotmail.com

### Web Wrangler

Toby Horst, 559-855-7765  
easyrider@netptc.net

### Advisors

Carolyn Witt, 559-325-7876  
cawittbchc@yahoo.com  
Toby Horst, 559-855-7765  
easyrider@netptc.net

## Advertising Rates

### Classified Ads

\$.10/word with a 20 word minimum (\$2.00), \$.50 a line after that.

### Display Ad Rate per issue

Business Card Size, \$8.00, 1/2 page, \$35.00,  
1/4 page, \$20.00, Full Page, \$50.00

Prices are subject to change without notice. **All prices are for one month, due the 10th of the month.** Editor reserves the right to refuse inappropriate ads.

**All paid Ads include an E-mail Blast to all members with current emails**

### NEWSLETTER EDITOR

Carolyn Witt  
6208 Amber  
Clovis, CA 93619  
559-325-7876  
cawittbchc@hotmail.com

### *Hoof Print 2013 Deadlines*

**Advertising, announcements, pictures and other copy must be received by editor by the deadline listed below.**

<u>Deadline</u>	<u>Publication</u>
Sept. 20	Oct.\Nov.
Nov. 20	Dec./January

### *Attention*

Your SJS Unit Board of Directors would like to invite any of our members to attend the monthly Board meetings or General meetings. It is important all directors have the same opportunity to hear the information, concerns or suggestions you wish to share. We are volunteers doing our best to keep our Unit informed and working smoothly. Refer to the newsletter for the information regarding times and location of upcoming meetings.

Respectfully  
Toby Horst & Char Meier  
Past Presidents

## "Travel Advantage"

Dear BCHC Members

Check out the latest edition of "Travel Advantage", @ [www.ytbtravel.com/bchc](http://www.ytbtravel.com/bchc) a travel newsletter full of terrific deals from YTB, our BCHC travel partner. The newsletter is chock full of great ideas for anyone's next getaway! You can download an icon to your computer desktop for instant connection to the BCHC Getaway website.

Please forward "Travel Advantage" newsletter to your friends and family and other BCHC supporters. The more we get the word out, the more people will use the BCHC Getaway travel site to take advantage of great rates on hotels, flights, rental cars and other travel-related items, the more BCHC will earn for our Treasury!!

Please do not hesitate to contact me if you have any questions about the travel site, how it works or what BCHC earns by participating in this great opportunity. Thank you for supporting and promoting BCHC Getaway!!

C.J. Hargreaves  
BCHC Editor/Travel Site  
Coordinator  
[cjohargreaves@verizon.net](mailto:cjohargreaves@verizon.net)



## Calling ALL Members!

Remember to please send an email to  
Chip Herzig:  
[chipherzig@gmail.com](mailto:chipherzig@gmail.com)

Let him know how you want your **State  
Newsletter:**



Or

By E-mail



The purpose of this publication is to keep its members informed on important issues that affect all horsemen and to inform the membership on up-coming events within the unit. The views and opinions expressed in this newsletter are those of the editor & authors and not necessarily shared by BCHC.

***Must be a member and  
may join at any ride***

***Must be a member and  
may join at any ride***

## **2013 Calendar**

**Board Meetings** are on the **1st Wednesday** of the month. All members are welcome to attend. Board meetings start at 6:30 pm at the Clovis Elks Lodge, 535 Woodworth Ave. (Bullard & Woodworth).

**Calendar & Ride schedule is on-going, and new events and rides will be published when confirmed.** *Note: dates and events are subject to change or cancellation; calling the contact person is recommended or checking [www.bchc.org](http://www.bchc.org)*

August 9, 10, 11	<b>Spanish Lake Campout and Ride</b> Limit of 15 riders	Joe and Carol Kaminski 559-733-9170
August 14	<b>General Meeting</b> Clovis Memorial, Freedom Room, 6:30pm	Any Board Member
August 18-25	<b>Big Meadows Horse Camp Work Party</b>	Joe and Carol Kaminski, 559-733-9471
September 7	<b>Shaver Lake Poker Ride</b> Ride is open to the public	Char Meier 559-297-1290 and Wanda Caradonna 559-392-3534
October 19	<b>Riddle Ranch General Meeting and Ride</b>	Cathie Walker, 559-283-1164
December 14	<b>Annual Christmas Party</b>	Put the date on your calendar and join us for fun, camaraderie and music

**Please contact any Board Member if you would like to host a ride or activity.**

**More rides to be added by Tara after meat bee season is over, check back on the website.**

Remember to check for any Unit updates at our Web Site:

**[www.BCHC.org](http://www.BCHC.org)** for the San Joaquin/Sierra Unit,  
**[www.bchcalifornia.org](http://www.bchcalifornia.org)** for the State Web Site

### **Big Meadow Horse Camp and Work Party, August 18-25th**

**Attention all Big Meadows workers:**

The camp will be open to our unit Aug. 18-25. If you do not plan to work please do not show up until the evening of Wed. August 21st. The remainder of the week will be for riding and fellowship.

As a reminder at this time no campfires or charcoal barbeques will be allowed. Gas stoves and propane grills are allowed. If you could provide a propane barbeque or grill to share please let me know. All meals will be on your own except Saturday night will be a potluck. Please provide your own meat and something to share.

A big thank you to the Galloping Gourmets for their previous years of providing delicious meals for us. Although their cooking will be missed we hope to see them with us. For questions or more information call **Joe Kaminski at 559-7339170.**

Don't forget to bring your favorite tools (shovel, rake, clippers, saw etc.) As a reminder, corrals are on a first come first served basis.



## Riding the Big Stump Trail - 6/1/13

By Tara Stephenson

On June 1st, while it was a sweltering day in the valley, 10 of us BCHC San Joaquin Sierra Unit members were blessed with temperatures ranging in the high 60's to low 70's that day. The riders who enjoyed the reprieve from the heat were **Dawn Smith, Patty Perrin and her sister Linda Jacoby, Tom and Debra Winegarden, Peter and JC Parkin, Bob Herrick, Jim Crawford and me.**

We met early due to the tour buses coming in, we wanted to make sure we secured parking spots for our rigs. We then leisurely tacked up and when everyone was ready, we gathered around for our educational Leave No Trace briefings. Our topic for education was poison oak (due to the fact that I was covered in it and made a very good visual aid) and safety on the trail. Our Leave No Trace talk refreshed our memories with valuable information as well as a great reminder of what is expected of us when we are on the trail.



We decided to take the Big Stump Trail that day, a ride that provides a lot of shade and a great trail to ride. Lots of history along the way and at the arrival point. We started out going through the General Grant Tree parking lot (lots of admirers of our beautiful horses from the tourists) and headed out the Azalea Trail to join up with the South Boundary Trail to take us to our destination a few hours away. As we rode along, we were treated to deer sightings, lush greenery, water crossings and a nice trail that is not only easy to follow but was well maintained. About an hour into our ride, we came up to Hitchcock Meadow. This meadow has many stumps in it that are very large, sad to see that they had been cut down well over 100 years ago but awed at the sheer size and age of those trees...most of them that had been there for over 2,000 years.

Still on the South boundary Trail, we transitioned over to the Big Stump Trail which took us up into the Big Stump parking lot for a much needed "break", nice to have a restroom available when you are a few hours out, hehehe and then we mounted back up to head on down into the Big Stump Meadow. There were glorious sights to see in this meadow. The Mark Twain Tree is all that remains of the 26-foot-wide, 1,700-year-old tree that took 2 men 13 days to cut down in 1891. Ironically, sequoia wood is brittle (we also saw a "feather bed", a method they used to lay branches down when the tree would fall) and the tree broke across the grain when it fell, so it was useless as timber. Nevertheless, the early loggers proceeded to chop down and carry away one-third of the ancient trees. Now that part is sad. We came across, always a breath-taking tree, the Resurrection Tree, this giant's top was destroyed by lightning and it is now "resurrecting" a new one, quite a sight to behold. We continued on, going past the entrance into the park, over across 180 to see the Sawed Tree. When loggers realized that this tree could not be felled in the direction they wanted, they gave up. The tree is still alive and continues to thrive despite the huge cuts that were made. Now it was time to head back, people were getting hungry and we had decided to eat at our trailers parked in the General Grant Tree parking lot so we started back, taking the Big Stump trail, picking up the Hitchcock Meadow Trail that took us back to the South Boundary Trail where we continued to enjoy the beauty that this great trail provides. Back at the trailers, we gathered for lunch and enjoyed the rest of our time together. Some of the riders decided they actually wanted to return to the valley (crazy) so a few of us got back into the saddle and rode a portion of the North Boundary Trail (this runs behind the General Grant Tree). This trail is quite a fun trail, lots of deer and toward the end of our journey, we went past the riding stable, then down really close to where the people that were walking the General Grant Tree

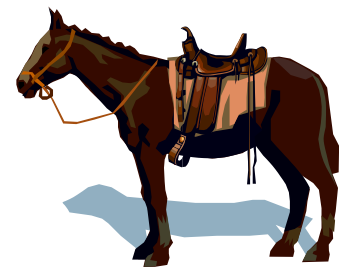


Loop were. We became quite the celebrities again. People tend to enjoy seeing the horses out on the trail as much as we enjoy riding them. Then back to the trailers and after cleaning up, we headed back to the heat. Ugh! But a great time was had by all and another successful ride for our awesome San Joaquin Sierra Unit.



## August, September Rides

By Tara



The lack of rainfall we had this winter brought out the **meat bees** really early. They are already in full force and attack without warning. Sadly to say, there won't be very many rides if any in the upcoming months. I do not want to take a group out and get attacked. It would not be a safe or enjoyable ride. I'm so sorry for this. I had wanted to host a ton of rides up in the mountains over the summer, but in all good conscience, I cannot put any of you in harm's way.

Please check the calendar on our website regularly. I will continue to look for places that will be safe to ride and will host rides when I find places that will be meat bee free.



## Chamberlain Work Party I, June 16-23

Wow! What a challenge! Building an outhouse would seem like such a simple task but ....in order to withstand snow loads and various weather conditions it proved to be more of an undertaking than any of us could have imagined. The logistics to move all of the materials, food and camping gear was a task in itself. Building materials were delivered to Voyager Campground by 4X4 wheel drive. There, they were then transferred to mule train and human train and then the cumbersome loads were moved into camp. Two loads on the mules were needed just



to bring in all our human needs and comforts. It was great that the trail is an easy ride trail and easy on the stock. **When it came to packing the materials to the Chamberlain Camp, it took 6 mule string trips, using trays, boxes and slings to transport all the materials. Each animal was led by hand or horse because of the long awkward loads. It took three days of packing before all the materials were at the building site.**



The pit for the toilet was dug by 4X4 club member Ed Fitzpatrick who proved to be instrumental in the building of this facility.



Many thanks to the members of our work party, **Toby and Katie Horst, Muriel Holland, Jim Dixon, Sandy Laspada, Debbie McDougal, Fredi Chrisman, Cara Peterson, Randy Witt, Peter Parkin, Jarod Hannah and his son Everett, Warner Dozier, Ed Fitzpatrick, Joe and Carol Kaminski and Bob Skinner from another unit.** A special thanks to **Gary Chrisman** for helping us to pack and get on our way at the trail head and for chasing parts for us. The weather and food proved to be fantastic. There were mornings that we had ice on the



water buckets. Evenings around the campfire were a great time to visit, meet new members and tell stories.

For those of you looking for a cool getaway whether a day ride or an easy over-night outing, Chamberlain Camp is the place to go. With a brand new outhouse, what could be better!

To get to Chamberlain Camp go to the Maxom Meadow trailhead located across the dam at Cartright Lake. From there it is an easy one hour ride into the camp. A Forrest Service permit is not required as this is not in the wilderness area. This is a great trail for any rider as there are no narrow rocky edges to worry about. The trail is wide, easy to follow and mostly flat. There are a few rocky places but we rode in barefoot and did fine.

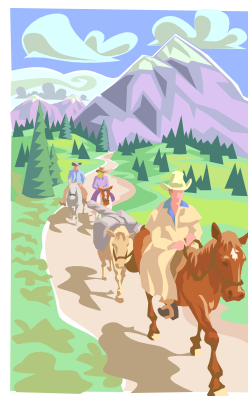


Hope to see you there soon.

Joe and Carol Kaminski

## The Shaver Lake Day Use & Campground facility Will be available June - October 2013

The following procedures have been established for the continuity of the facility. When planning a day/camping outing it is necessary to contact one of the members listed below for the gate combination. For security reasons the combination will be changed throughout the season. The camp is available to our Unit members for day use and/or camping with your stock. The camp is set up with three large stock pens and three camp sites offered on a 1\* come 1\* served basis. The three picnic tables and fire pit are located in a shared area. It is necessary for you to furnish water for personal use and stock use. **The pens must be cleaned of hay/manure after each use or a fee will be assessed for clean up;** remember our “**Leave No Trace**” policy. There is no potable water on site; however a port-a-potty is on site for our human needs.



Fee schedule per membership:  
Day Fee \$5 **or** Camping Fee \$10 per night

For reservations contact:

**Wanda Caradonna** 559-392-3534 cell

**Char Meier** 559 297-1290 home 559 905 6948 cell



## Panoramic Point Ride - 6/29/13

By Tara Stephenson and pictures by William Peverill

On June 29th, while it was a sweltering day in the valley, 10 of us BCHC San Joaquin Sierra Unit members were blessed with temperatures ranging in the high 60's to low 70's that day. The riders that enjoyed the reprieve from the heat were **Debbie Davis, Randy and Tammy Weaver, Rick and Patty Peeren, Brenda Morgan, her daughter Miranda Morgan** and we welcomed a new member, **Katie Prather and me**.

We met early due to the tour buses coming in, we wanted to make sure we secured parking spots for our rigs. We then leisurely tacked up and when everyone was ready, we gathered around for our educational and **Leave No Trace** briefings. Our topic for education was staying with the trail boss, how important it is for us to all stay together as a group. Not only can people that go out ahead of the trail boss get lost, they are not covered by our insurance if they leave the trail boss. The trail boss is there for that reason, to **LEAD** the group, to be aware of the members, to making sure everyone is doing okay. But if "rogue" members decide to just take off, then what's the use of even having a trail boss? Just sayin! Our Leave No Trace talk refreshed our memories with valuable information as well as a great reminder of what is expected of us when we are on the trail.

Today's ride was to head up to Panoramic Point, what a sight to behold! We started out on the North Boundary Trail which took us up to the Panoramic Point Trailhead. We tied up our tired horses for they had just climbed about 1500 feet and I'm sure they appreciated the rest. We had our lunch and I offered to stay with the horses so that the rest of the gang could hike up to the point and see the awesome sight for themselves. We would have ridden up there but the horse trail has long been forgotten and is no longer maintained. So if we wanted to get up there, we were gonna have to do it on our own two feet. Up at the point, they were treated to outstanding views of the Great Western Divide, Sierra Crest and the Monarch Divide. The elevation at this point is 7500 feet, whew! Then it was time to get back in the saddle and head back down, passing Round Meadow, joining up with the North Boundary Trail as we did a big loop back. We passed by the riding stables, back behind the General Grant Tree and then back to the trailers. We all enjoyed a nice 5 hour ride, with many a deer sighting, all under the canopy of those beautiful giant sequoias. We all said our goodbyes, made sure our parking area was clean, free of manure and left with a big smile on our faces. We headed back to the heat. Ugh! A great time had by all and another successful ride for our awesome San Joaquin Sierra Unit.



Beautiful views, wonderful day, and great people to ride with





## Sanger Horse Property

**1460 N Piedra Road  
Sanger, CA 93657**

**\$589,000**

Very custom 3-bedroom/2.5-bath home on 2.5 acres in Sanger with fabulous views. This designer floor plan delivers an impressive upstairs master suite with whirlpool tub, dual sinks, walk-in closets, separate shower, gas fireplace and wet bar with refrig. The dramatic living room features 19' ceilings with a marble clad fireplace for keeping warm, entertainment niche and breathtaking hand-made pine wood flooring. The dining room and kitchen feature custom cabinetry. The kitchen boasts granite counter tops, Thermador professional chef quality gas stove/oven and hood, large walk-in pantry and a breakfast bar with commercial quality stools. French doors offer exits from many locations in the home to tastefully landscaped yard and patio areas surrounding the home. Guest bedrooms are located in separate wing of home. At the rear of the property you will find a 2 stall horse barn with tack room, hay and tool storage areas. Hours of riding trails can be found just outside your doorstep of this beautiful home.



**Joanna Bryan/Linda Evans**  
Guarantee Real Estate  
180 W Bullard  
Clovis, CA 93612  
Linda: (559) 360-1286  
Joanna: (559) 360-1110  
Joanna@FindYourFresnoHome.com



If you have a brokerage relationship with another agency, this is not intended as a solicitation. All information deemed reliable but not guaranteed.



**GUARANTEE<sup>®</sup>**  
**REAL ESTATE**  
[www.guarantee.com](http://www.guarantee.com)



## Chamberlain Work Party II, July 7-14th

By Katie Horst and Sarah

Hi! My name is **Sarah**. I am 5 years old and new to this whole work party idea. I haven't figured out the "party" part but I do understand the "work" part. You wouldn't believe what we had to do. My load wasn't too unusual but it was heavy about 160 pounds or more. Talk about odd looking loads! Eight foot long boards sticking way out behind us and covering us like some "mid-evil" contraption. Some loads were even so odd that the two-legged human mules had to carry them in. What a sight!



Mornings and evenings were great. We got to meander around the meadow feeding on the lush grasses. This all suddenly changed one evening. An odd scent drifted into the meadow putting all of us on alert. I really don't know what happened next but all of a sudden something scared us and before we knew it we had broken through the fence and were running for our lives. Even the old-timers like Arnie and Henry were caught up in all the excitement.

We ran hard and fast. Nothing was going to slow us down. One of our humans at Voyager Campground thought he could catch us but we were so scared that we ran right past him. Good thing he stepped behind the tree or we would have run right over him, unintentionally of course. We were scared you know.

When the pace finally slowed, four from our group broke off. They were newbies you know and not part of **OUR** herd. Our fearless leader **Dixie**, urged us on, farther and farther from the danger that lurked in the darkness.

We finally slowed to a trot and as we emerged from the forest, it wasn't a yellow brick road but it was a road and I assumed at this point we were headed home. We followed the road across the dam and through many human camps but we couldn't find our trailers. Maybe they were stolen or moved but the only thing we knew to do was keep heading down the road into the growing darkness.

Suddenly lights appeared. We thought the scary beast had found us again so we quickened our pace. Further and further down the road we raced for our lives. We kept to the safety of our single file line as we had been taught. However the beast with the two glowing eyes continued to gain ground on us taking the opportunity to come along side and pass us at a wide spot in the road. Dixie was separated from the rest of us and none of us knew her fate as we continued down the road.

Dixie was captured and let out a loud scream and we reluctantly came to her assistance. One by one we were captured and restrained with all kinds of odd ropes and twine. As I was caught, I recognized the one who had caught all of us. The humans called him **Peter**.

Not long after, other humans began to show up and brought trailers to take us back to the trail head where we spent the night. We were puzzled. We must have missed that turn somewhere.

In the morning the humans led Dixie and Slim back to camp and we followed. Two of the newbies were already back and soon the last two of our friends were back safely. Everyone was home safely without a scratch. Some complained of tired muscles, after all we had run more than six miles to get away from the horrible danger. This will be a tale we will enjoy telling the grandkids. Grandkids? Oh wait, I'm a mule.

This is a true story, the perspective has been changed to protect the innocent.



By Toby Horst (the real story)

## Chamberlain Meadow Horse Camp Work Parties June 16 – 23 & July 6 – 13, 2013

The 2013 Chamberlain Meadow Horse Camp work parties were the largest challenges, in recent years, the San Joaquin Sierra Unit has ever tackled in a building project. Our Unit has built trail head corrals, walls and other horse camp projects, but never an ADA rated toilet several miles away from the trailhead. We had to mule pack 10 sheets of plywood, 65 - 2 by 4, 6, 8in studs and roof supports, along with vent pipes, and wire mesh to field build a semi permanent toilet at the Chamberlain Meadow camp site. It took over 20 mule string loads to get the materials to the site, as well as packing in a generator to keep the cordless tool battery packs charged.

The first week there were 14 people off and on at the site, with 14 mule loads of kitchen, tents, personal gear, food, cordless tools and shovels/chainsaws packed to the site. The logistics alone were mind boggling. Having to develop ways to carry the many loads of materials on mules was another challenge for the work crew. There was not a break in activity the entire first week and the plywood sheets had to be cut to 16 inch widths 8 feet long to allow the mules to turn their heads to make the trail corners. These were just a few of the challenges. At the end of the first week, the Toilet was erected and ready for use without the finishing touches, painting and roof trim. Many seams of 1 by 4in fir strips had to be brought in the second week, along with 9 gallons of paint, caulking and foam to seal all the openings.

There were 12 workers off and on during the second week, completing the toilet for permanent use, as shown below.



The Chamberlain Cow Camp Meadow was originally surrounded by barbwire and metal T poles. Two-thirds of this material was removed several years ago by the SJSU and piled at the Cabin site for later removal. Part of this work project was to haul the barbwire to the jeep road, 1-1/2 miles away, so the four wheel drive clubs could haul it off the mountain. During both weeks, many mule string loads removed all the barbwire that was at the cabin leaving only T poles for future removal.

This may seem like a small project, but it was a challenge for everyone and there was a sigh of relief when completed. We hope that our Unit will use the site and enjoy the Backcountry experience.

## TAMARACK CAMPOUT

By Katie Horst

We had a great time at Tamarack and it was quite cool compared to the Valley. This was our first time to have to camp on the right side by the creek as there were several campers in our usual area. It turned out great because it had more shade and plenty of room for the trailers and places to high line. We didn't have a big crowd but we didn't expect too many people to come up with the heat and fire restrictions.

We rode on Friday and saw different areas. Toby took us cross country and we were surprised that the stream areas did have water in them. On Saturday we had nine riders whom we divided into two groups, one going up to the overlook to see Shaver and the other staying in the meadow areas with cross country riding done by both groups. The riders all seemed to have a good time and enjoyed the experience of cross country experience with their horses. Participants were **Joe & Carol Kaminski, Toby & Katie Horst, Peter Parkin, Art Riesgo & Becky Balistreri, Debbie Davis, Bill Chilson and Stephen Naylor.**

We had a great pot luck dinner and used a Bar B Q with propane tank to cook on that was allowed by the "No Camp Fire" restriction. It did look like rain so we put up tarps to protect the sitting area but they were not needed as we just had some clouds and thunder but no rain.





# SHAVER LAKE POKER RIDE

**Saturday  
SEPT. 7, 2013**



DESIGN BY SADDLEGRAPHICS.NET

*Buy your \$5.00 poker hand  
at the 8:00 a.m. registration.  
Ride begins at 9:00 a.m.,  
an easy ride about 2-1/2 hours  
all on a well marked trail.*

Payoff will be from the net proceeds  
of the Poker Hands

– to be split 3 ways:

1/3 High hand

1/3 Low hand

1/3 to San Joaquin Sierra

Backcountry Horseman Unit.



WWW.BCHC.org

• Participants must be at least 21 years to purchase up to 3 poker hands. • Insurance requires riding helmets for youth 17 years and younger and must be accompanied by a parent/guardian. • Water is in short supply - please furnish water for your stock.

**Directions:** Take Highway 168 east to Shaver Lake. Turn right at Dinkey Creek Road, drive 2.5-miles. Watch for **BCHC Poker Ride** signs. Bring lunch and a chair.

*Reservations are limited, hurry to send your non-refundable \$10 pre-registration fee, per rider, by August 24, 2013.*

Mail your check to:

**BCHC**

**P.O. Box 25693**

**FRESNO CA 93729**

Please include first/last name, contact phone number, mailing address, email and 2 or 3 horse-bumper pull or gooseneck. A confirmation email will be sent out upon receiving registration information and check.



"WHERE QUALITY AND SERVICE ARE A-1"

**BLAKE RICKEN-OWNER**

---

5092 N. ACADEMY      559-322-FEED  
CLOVIS, CA 93619      FAX 559-322-8333  
A1FEEDSTORE@GMAIL.COM

---

FEED AND ANIMAL HEALTH SUPPLIES  
OPEN 7 DAYS A WEEK

**QUESTIONS?** Contact **Char Meier**, (559) 297-1290/email: shaverider@aol.com or **Wanda Caradonna** (559) 392-3534/email: wandacaradonna@sbcglobal.net

**TSC TRACTOR  
SUPPLY CO.**  
TractorSupply.com

1630 Herndon Ave. at Fowler Ave. • Clovis CA 93611  
Phone: 559-298-1496 • Fax: 559-298-1279

Ric Rocco, store Manager



# The Sunshine Corner

By Becky J. Balistreri



## WELCOME NEW MEMBERS:

We are always excited to welcome our new members. Remember to invite others you know who enjoy their equine friends and the backcountry to join us too! New members may join at any ride.

Jerod and Dawn Hannah joined from Tollhouse  
Bob Hamm from Clovis  
Katie Prather from Auberry

## MEMBER NEWS

We wish to express our condolences to our members:

Randy Witt and Family

Debbie McFarren and Family

This column is intended to help us all keep up to date with the important events in the lives of our members. If you have something happening in your family or know of something happening in another member's family, please send the information to me at [beckybala@hotmail.com](mailto:beckybala@hotmail.com). I will be more than happy to include the news in the next print of the BCHC San Joaquin Sierra unit newsletter.

## Kids Corner

**Horse 4X4 Boggle Game**  
**See how many words you can find**  
**relating to horses.**

M	O	T	N
A	L	L	I
N	G	O	P
E	T	R	T

**I found 6 for sure and 5 maybes.**  
**Email me at [cawittbchc@hotmail.com](mailto:cawittbchc@hotmail.com) with your list.**



180 W. Bullard Ave.  
Clovis, CA 93614

**Your Full Service Realtor**  
**Jessica Gabrielson**  
Realtor, GRI, SRES, SFR, ASP

559.905.7724  
Office 559.321.6040  
Fax 559.321.6044  
[jgabrielson@guarantee.com](mailto:jgabrielson@guarantee.com)  
DRE#01338726



*"I don't horse around when it comes to selling your property!"*

## SJS Unit Fund Raisers For Sale

### "There's a Mule Under My Saddle Cookbook"

by Jean Brown of Idaho \$10.00

**Hats** \$15.00

Khaki with a maroon or forest green bill and are embroidered with one horse, two mules and says Backcountry Horsemen of California.

**Scarf** \$13.00

Scarves are a dark blue and are embroidered with one horse, two mules and says Backcountry Horsemen of California

**Maroon Shirts** \$35.00

(Extra Tall \$38.00). The shirts must be prepaid before the order. The logo on the left is BCHC with San Joaquin Sierra Unit under the BCHC. Names added for \$5.00 in a group.

### Horse First Aid.....

great, informative quick reference \$25.00

Contact: Pete Parkin 559-871-4500 [ktzpaw@yahoo.com](mailto:ktzpaw@yahoo.com)  
&/or look for items at our rides and meetings.



## Montana de Oro Ride

By Jim Knabke (RR)

Well, this is your “roped reporter” (RR) with some notes on the subject ride. On July 12th thru 15th, sixteen of our club members visited Montana de Oro (MDO) state park ... “This park features over 8,000 acres of rugged cliffs, secluded sandy beaches, coastal plains, streams, canyons” (according to CA State Parks info). It is kind of a “surf and turf” of riding; i.e., riding your horse along (or into) the surf, and also riding in coastal mountains. **Pete and Jaycee Parkin** organized the ride so this reporter, and I expect all the attendees, were mighty thankful for his efforts. MDO is a beautiful spot, and if you get the opportunity to go, you should. There are two group horse camps at MDO – our BCHC group was in one site and the BCHC chapter from **Kern River Valley** was in the adjacent site. They were doing **Karaoke** every night and some of our group joined in – good fun except if you wanted to go to sleep really early. They were a very convivial group.

One of the real attractions for our sunbaked Valleyites was the cool sea breezes. We had morning mist, a little afternoon sun, and the temperature did not exceed 70 degrees the whole trip. (The varying human thermostats were a wonder to behold – we had people walking around in tee-shirts and shorts, and others bundled up for winter.) As you might expect, there is a lot of sand around a beach area, so the horses generally got a challenging work-out; also, the mountain trails climb pretty good, so another challenge for the horses. The trials are fun and beautiful. If your horse has never seen the ocean before, the sight can make it a little nervous. However, everybody – horses and riders – came through safely, except a few sore muscles (again, horses and riders). If you want to know more about this spot and riding your horse there, I think any of the attendees would help with info (There are stalls and water for the horses.). We had a pot-luck Saturday night and a lot of good conversation and food the whole trip. This reporter and spouse sure did enjoy the outing. For the record attendees included: **Pete and JC Parkin, Randy & Carolyn Witt, Dawn Smith, Ted Fischer, Art Riesgo and Becky Balisteri, Wendy Garza, Debra McFarren, Cindy and Darcy Schueler, Jim Crawford & daughter Kimberly, and Jim & Linda Knabke.**



# San Joaquin Sierra Unit Board Meeting Minutes

May 1, 2013

Clovis Elks Lodge, 535 Woodworth Ave. Clovis, CA

Call to order: 6:35 by Greg Caradonna

**Additions to New Business:** Shirt purchase, Galloping Gourmets, Spanish Lakes Ride

## In Attendance:

President: Greg Caradonna      Vice President: Joe Kaminski  
Treasurer: Pete Parkin      Secretary: Cindy Mueller  
Directors: Wanda Caradonna, Cathie Walker, Tara Stephenson, Carol Kaminski, Fredi Chrisman, Ted Fischer, and Randy Witt  
Advisors: Toby Horst      Members: Katie Horst, Jan Mikkelsen, Carolyn Witt, Kathy Rhode, Becky Balistreiri, Art Riesgo, and Alan Fry

## Review and Approval of Minutes:

March and April minutes were reviewed. Greg was concerned over the March minutes so the minutes were going to be reviewed again, some changes were noted. Minutes to be reviewed after the meeting and presented at the June meeting for approval. April minutes reviewed and corrected.

**Correspondence:** The PO Box and CD renewals were received. Pete P. researched the CD possible changes. Due to the financial situation it is best to keep everything as is; no other plan would have increased the interest. Randy W. made a motion to keep the CD as is, Ted F. seconded, motion passed.

## Treasurer Report: Period ending 04/2013

YTD Income:	\$ 1521.52	General Checking	\$ 17513.80
YTD Expenses:	<u>(1308.76)</u>	CD's & Savings	\$ 11330.04
YTD Profit/Loss	\$ 212.76		

## Committee Reports:

Education: Saddle fitting clinic, May 4<sup>th</sup>. The speaker for the next general meeting will discuss hoof care.

Membership: Jan M. reported six new members from the Parade Practice. She will provide the total members to date by the next meeting.

Newsletter: Deadline is May 20<sup>th</sup>.

Public Lands: Ted F. reported that Tom McClintock is assisting the equine side of the Yosemite issue. Look for updates.

Our Unit, BCHC-SJSU won the 2012 Trail Volunteer

Sunshine Corner: Becky is getting comfortable in her new position.

Shaver Lake: Is open, the toilet will arrive on May 9<sup>th</sup>. Wanda will be assisting Char with the reservations. Please check the newsletter for updates.

Rides: The calendar is all up to date with rides scheduled through the summer. Joe K would like to have a short meeting after the general meeting with those attending the Spanish Lakes ride.

## Old Business:

Ponying Clinic will be held on June 8<sup>th</sup> at the Ranch, hosted by Kathy Rhode. There would be expenses for the event due to rental of the arena and the cleaning of the toilets, Ted made a motion to allow \$150.00 for the event with a \$10.00 per family group charged, seconded by Randy, motion passed. It was also brought up that at the March meeting when the Board voted on approved members to pony at this time, Randy Witt was not in attendance. It was discussed and agreed upon that if he was present that night, he would have been added to the list, the adjustment was noted.

## New Business

Business Cards: Toby H. and Joe K. will work together to make a universal business card for BCHC-SJSU.

Unit Owned Chain Saw: The idea of purchasing chain saw equipment by the Club for the Club was brought to the Board. Several questions were brought up on storing and maintenance. It is agreed that it's a good idea but more details need to be obtained.

## Adjournment:

The meeting was adjourned at 8:18 pm.



☐ **NEW MEMBERSHIP APPLICATION**

Backcountry Horsemen of California

☐ **RENEWAL APPLICATION**

☐ **CHANGE - ( ) PARENT UNIT ( ) ADDRESS/PHONE/EMAIL ( ) MEMBERSHIP TYPE**

**DCTR (YOUR MEMBERSHIP NUMBER)** \_\_\_\_\_

**\*\*NEW MEMBERS WILL BE ASSIGNED NUMBER BY MEMBERSHIP CHAIR**

**PARENT Unit Affiliation:** (Select and **CIRCLE ONE** Unit as your Primary Unit Affiliation)

Antelope Valley  
Eastern Sierra  
High Country  
High Sierra  
Kern River Valley  
Kern Sierra  
Lake-Mendo  
Los Padres

Mid Valley  
Mother Lode  
North Bay  
Ohlone Riders  
Redhawk Riders  
Redwood  
San Diego  
San Geronimo Pass

San Joaquin Sierra  
Santa Ana River  
Sequoia  
Shasta Trinity  
Sierra Freepackers  
Sutter Buttes  
Top of the State

**Mail To:**  
**BACKCOUNTRY HORSEMEN**  
**OF CALIFORNIA**  
**PO BOX 535**  
**BEAUMONT, CA 92223**  
<http://www.bchcalifornia.org>

**Donate to BCHC**  
**Education Fund?**  
**Tax Deductible**

Packer \$10.00  
Mule Skinner \$25.00  
Other (Write in) \$\_\_\_\_\_

**MEMBER'S NAME** - Please Print Clearly: \_\_\_\_\_

**SPOUSE/MEMBER'S NAME** - MUST SHARE SAME ADDRESS: \_\_\_\_\_

**ADDRESS**

**CITY**

**STATE**

**ZIP**

**PHONE**

**EMAIL ADDRESS**

**Make Checks Payable to: BCHC**

**CHECK #** \_\_\_\_\_

**DATE SUBMITTED:** \_\_\_\_\_

**TOTAL ENCLOSED: \$** \_\_\_\_\_

**PARENT UNIT MEMBERSHIP TYPES: (CIRCLE ONE)**

**Individual \$45.00\***

**Family \$55.00\***

**Benefactor \$100.00**

**Patron \$250.00**

**Mt Whitney \$500.00**

**ASSOCIATE MEMBERSHIPS: AN ADDITIONAL \$15.00 PER UNIT IS ADDED TO YOUR PARENT UNIT DUES.**

**ASSOCIATE MEMBERSHIP UNIT AFFILIATIONS MAY NOT BE FOR THE SAME UNIT AS YOUR PARENT UNIT.**

**Associate Membership for:** \_\_\_\_\_

**\$15.00/unit (Unit Name from above list)**

Please clip form along dashed line -

**KEEP BELOW INFORMATION FOR YOUR RECORDS**

**PARENT BCHC MEMBERSHIP TYPES**

Individual, Family (Shared\*), Benefactor, Patron, and Mt Whitney. A Parent Membership is affiliated with a single Local Unit. BCHC members may NOT hold more than one active Parent Membership.

A SHARED Membership is for two adults with differing last names, each sharing a common address.

**ASSOCIATE MEMBERSHIPS**

These special Memberships are only available to persons already holding Parent BCHC Membership. No one may sign up for an Associate Membership without 1) having registered one of the Parent Membership types, and 2) having selected Parent Unit affiliation.

- You may sign-up for as many Associate Memberships as you like.
- Associate Memberships may also be initiated at any time during the term of your Parent Membership.
- Associate Memberships must expire concurrently with the Parent Membership, and are renewable only at the time of renewal of the Parent Membership.

Complete information regarding BCHC Membership is available on the MEMBERSHIP page at: <http://www.bchcalifornia.org>

**KEEP FOR YOUR RECORDS**

I SUBMITTED AN Application Form for:

☐ Individual Membership \$ 45.00  
☐ Family (Shared) Membership \$ 55.00  
☐ Benefactor Membership \$100.00  
☐ Patron Membership \$250.00  
☐ Mt Whitney Membership \$500.00  
☐ Donation - Packer \$10.00  
☐ Mule Skinner \$25.00  
☐ Other (Write in) \$\_\_\_\_\_  
☐ Associate Membership \$\_\_\_\_\_  
Total Remittance \$\_\_\_\_\_  
Check Number \_\_\_\_\_  
Date Mailed \_\_\_\_\_

Verification of BCHC membership is available via (1) BCHC unit president reports (2) BCHC unit membership chair reports (3) provide a stamped self-addressed envelope or (4) provide a valid email address



## San Joaquin Sierra Unit

P.O. Box 25693

Fresno, CA 93729-5693



## ***Objectives & Purpose of the Backcountry Horseman of California***

*From the BCHC Bylaws*

- To improve and promote the use, care and development of California backcountry trails, campsites, streams and meadows; to advocate good trail manners.
- To promote the conservation and utilization of our backcountry resources in concert with livestock transportation.
- To keep the backcountry trails and forage areas open to horseman on all public lands.
- To keep current information before the Corporation membership and its local Units regarding new legislation or management plans related to government regulations of the backcountry.
- To support or oppose new proposals, plans and restrictions as related to the interest of horsemen and those persons interested in recreational stock use and enjoying the backcountry.
- To promote the interest of people who, due to health or physical factors, need transportation other than by foot on backcountry trails.
- To promote public awareness and interest in the historical aspect of horsemen and stock in the backcountry and to help educate backcountry users on the ways to use the trail and foraged in a manner that conserves the backcountry resources.
- To assist in keeping the public informed of the vital need for a clean backcountry.
- To promote a working relationship with and keep the work and interests of the Corporation before our local, state and federal officials.
- To assist in the formation and continuation of local Units to carry out these purposes.