



San Joaquin Sierra

Hoof Prints



August-September 2017

Issue 5

San Joaquin Sierra Unit, BCHC
PO Box 25693
Fresno, CA 93729-5693

Email- membership@bchcalifornia.org (membership email only).
On the WEB: <http://www.bchcsjsu.org> (SJS unit) or <http://www.bchcalifornia.org> (State)



Concerned Men and Women Dedicated to Gentle Use of California Trails and Backcountry

PRESIDENT'S MESSAGE

Here we are in July and some trails still remain closed due to snow or are too wet to travel. How thankful we are for the water situation. While we were at Edison lake the spillway was running full speed, what a sight! What a privilege it was to once again have **Ron Jefferson** drive up to Edison to give the workers a night of music. It doesn't get any better than sitting by the fire and listening to Ron. How nice it was to go over to Montana De Oro to ride and relax for a few days. Thanks **Pete Parkin** for once again organizing the ride at Montana De Oro had no spaces left. Looking for a way to beat the heat and do some riding? Come on up to Tamarack for our first annual **Diana Sorensen Poker Ride**. The ride will take the place of the Shaver poker ride with many more offerings. We will offer you a choice of 2 rides and offer overnight camping. The road has been improved. We will be having some entertainment one night. The date is Aug 5th, but come early and camp out. Light breakfast and deep pit lunch will be provided. All pre-registered will go into a drawing for a belt buckle. Hope to see you there.

The Sequoia forest has enlisted the help of our unit for some packing projects. Thanks to **Bob Herrick** for already helping out with one of the projects. Big Meadows continues to flourish, thanks to those who helped out on our work project there. Donations continue to come in and are paying the way of the camp. Thanks to all who continue to donate to this on going venture. Thanks also to **Jim Knabke and Duane Peverill** from our unit and **Trish Pendegraph** of the **High Sierra** unit for overseeing the camp.

We will be having a small work party **Aug. 22-24 at Chamberlain** camp, if interested call **Joe or Carol at 559-909-0505**. We will also be putting on a **Beginning Pack Trip to Chamberlain Camp Aug. 25-27**. Again call Joe or Carol at 559-909-0505.

We are still looking for a historian for our unit. Also if you have a favorite place to ride and would like to host a ride, we would be glad to help with the particulars.

Remember to stay in the saddle, the ground is hard,
Joe Kaminski
President

In this Issue

Page 1	President's Message
Page 2	2017 Calendar
Page 3	Montana De Oro
Page 4	Edison Work Party
Page 5	Diana Sorensen Poker Ride
Page 6	Cook Trailer and Big Meadows
Page 7	Dave Stamey Concert
Page 8	Officers and Coordinators
Page 9	Sunshine Corner/Calling all Members to Help
Page 10	Backcountry Cooks/Lighter Side
Page 11	Calendars/Peter's Pipeline
Page 12	Advertisements and Information
Page 13-14	Minutes for May and June
Page 15	BCHC Membership Form

2017 Calendar

Board Meetings are on the **1st Wednesday** of the month. All members are welcome to attend. Board meetings start at 6:30 pm at the Clovis Elks Lodge, 535 Woodworth Ave. (Bullard & Woodworth).

Calendar & Ride schedule is on-going, and new events and rides will be published when confirmed. *Note: Dates and events are subject to change or cancellation; **calling the contact person is recommended** or checking www.bchcsjsu.org*

August 4-6 Tamarack Camp-Diana Sorensen Poker Ride, contact Duane Peverill -559-908-3138

August 16 General Meeting, Elks Lodge 535 Woodworth, Clovis 6:30 pm

August 21-24 Chamberlain Work Party, contact Joe Kaminski, 559-909-0505

August 25-27 Chamberlain Beginning Pack Trip Essentials, contact Joe Kaminski. 559-909-0505

October 21 General Meeting and Election at Yosemite Falls, Dakota and Cedar

December 9 Christmas Party

Mark your calendar for this event:

February 2, 2018 Dave Stamey Concert, Elks Lodge Clovis, contact Ted Fischer 559-855-8599
tjfischer3@gmail.com

The new year is here and the Officers/Directors will be reviewing and creating the year's activities. Please review this year's calendar at www.bchcsjsu.org, and let us know if there are any other activities that you would like added to the calendar. Also, is there any activity that you would like to **sponsor**? We are always looking to improve the club and making it fun for all members. Please submit your ideas, wpeverill@sebastiancorp.net. You may call 559-908-3138 and I will get back to you.

William Duane Peverill

Vice President
BCHCSJSU

Remember to check for any Unit updates at our Web Site:

www.bchcsjsu.org for the San Joaquin/Sierra Unit,
www.bchcalifornia.org for the State Web Site

The purpose of this publication is to keep its members informed on important issues that affect all horsemen and to inform the membership on up-coming events within the unit. The views and opinions expressed in this newsletter are those of the editor & authors and not necessarily shared by BCHC.

Montana De Oro

By Ted Fischer



Hi there Cowboys and Cowgirls,

This message is coming to you from beautiful downtown Montana De Oro on the beach and out of the heat. Seriously the weather here on the beach and on the East boundary Trail is beautiful. Most of us arrived Friday afternoon to the sun-baked campground of 75 degrees. The night time activities consisted mainly of sitting around the campfire to talk, tell old stories and stay warm. Fifty-five degrees is cool, especially when you just left 108 degrees. Some folks arrived a day early to cool off, relax and ride. The early arrivers were **JC and Pete Parkin, Joe and Carol Kaminski and Pat and Duane Peverill**. The rest of the beach crew were: **Bob Skinner and Michelle Collarman; Gary and Sue Van Sickle with their granddaughter Sky; Hanna Rousey and Dustin McMurry; Paul Sorensen; Rick and Patty Pereen; and Debbie Davis and Bill**. What a great group it was! We all talked, ate, rode, laughed and told stories of the past. It sure is fun to be together with old friends around the campfire and out on the trail.

Speaking of trails, do you know how the BLOODY NOSE TRAIL got it's name? I heard that a cowboy got in a fight over a beautiful girl down at Spooner's Cove and rode home with a bloody nose. What have you heard? The rides on the beach were absolutely beautiful with the waves washing in and out across the sand. Most of the horses, which included mine (Hank), didn't really like the foamy sea water washing back and forth across their feet and underneath bellies. But the white crested wave, the beautiful sand, the large chunks of seaweed and driftwood were gorgeous. Some folks rode the inland trails, the East Boundary Trail, the Hazard Trail, the Canyon Trail that leads into Spooner's Cove and the Canopy Trail. I heard that some never left camp because they couldn't take dogs or beer out on the trail. We all had fun and wished that more of you could have made it out this year.....perhaps next year. I want to thank **Pete** for putting this ride together for us and those that got the BBQ going for Saturday night's BBQ and pot luck. Whan an out-standing meal that was!!! I gained five pounds!!! Enjoy the pictures mostly taken by **Duane**. See you next month at the **Tamarack Ridge Poker Ride!**



Edison Work Party

Lake Thomas Edison Work Party

We had a pretty successful week of it without anyone getting hurt and only minor trailer damage. Most of the group arrived the afternoon of Saturday the 24th of June rigs with a lead vehicle taking them through the wonderful narrows of Kaiser pass. My brother **Doug** and I (**Jim**) arrived at dusk just in time to have a little light for getting the stock put up and saying good night to the rest of the crew.



Joe and Carol did a great job at hosting the camp and providing breakfast, lunch, and snacks throughout our stay at **High Sierra Pack Station**. It was very nice and we appreciated the use of their kitchen facilities and the shower.

Sunday the 25th we hit the trail for a reconnaissance run to find out the scope of work we had to do on the trails. **Allen**, from the pack station led us out on the ride and we spent most of the day on the trail. We made it as far as Cold Creek, and GPS recorded 6 fallen trees across the trail to that point. Cold Creek was running too fast and deep to cross. Monday we hit the trail about 10am and with the help of Josh from the Forest Service we were able to clear 1 log with the chainsaw. Once we hit the wilderness, we had one log to take out with the buck saw, then some logs on our side of Cold Creek and clear an alternate route for backpackers to take a large fallen log across the creek up about 100 feet from the regular trail. We had loppers, axes, and small saws as well, that helped with some brush and cleaning up the fallen trees where they crossed the trail. **Debbie Mc Dougald** showed up Monday night and after another terrific breakfast, we headed out Tuesday morning at 9:30 with 1 pack animal loaded with gear needed to remove a 52" log found on another trail. All went well until we hit the marshy areas again. After a small blow up with mine and Doug's horses the rest of the group continued on. Doug and I headed back to camp on foot with our heads a little lower as we had to return to the valley that day.

This was the first work party for **Doug**, **Matt**, **Rhyann**, and me and we really enjoyed the whole group. **Bob and Josh** were awesome preparing everyone and making sure the rookies did not hurt themselves. I can't say enough about the fellowship, storytelling, and wealth of knowledge shared on the trail, and around the campfire. Many thanks to all who participated. **Joe, Carol, Allen, Randy, Matt and daughter Rhyann, Bob, Pete, Josh, and Debbie**. A huge thank you also to the **Cunningham's, John and Jenice** for the warm hospitality we received. Until we cross trails again...Jim Laber



Diana Sorensen 1st Annual Memorial Poker Ride

Tamarack Snow Park Area

OPEN TO THE PUBLIC

Saturday, August 5, 2017

Back Country Horsemen of California San Joaquin Sierra Unit

Saturday, August 5, 2017 Breakfast and Lunch served In the saddle and riding out by 10:00 a.m.

RSVP By July 31, 2017 To confirm attendance & directions. Information available Jim/Debbie 559 779-3507

Mail Check to:

Debbie Dixon

PO Box 319

Shaver Lake, California 93664

Make Checks Payable to BCHCSJSU

Dry Camping available. NO POTABLE WATER. Creek water maybe available for horses/mules.

Riders Meeting 9:00 A.M. All riders out on ride no later than 10:00.

Two separate Trails will be available to ride. Your choice.

No Dogs. No Stallions. No ponying allowed on this ride and under 18 must wear helmet but cannot participate in Poker Hands.

Coffee, Pastries and Biscuits and Gravy will be served prior to ride.

Lunch -Awards-Raffle after ride.

\$35.00 non members. \$30.00 members. May join at ride. Includes Breakfast and Lunch that you will not believe.

Bring your appetite, one poker hand.

Early Registration by July 31, 2017 entrants will receive an extra poker hand and name will go into drawing for **Memorial Buckle.**

You do not have to ride to purchase poker hands. Must be 21 to purchase Poker Hand.

Raffle with great items. Clovis Rodeo Tickets and Many other raffle items will be available. Raffle tickets \$1.00 each or 6 for \$5.00.

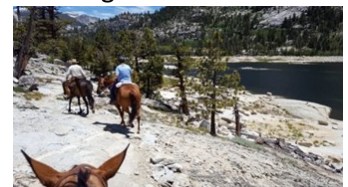
Open to The PUBLIC-Bring Chair-Water for your horse. Sign up EARLY!!

Web page bchcsjsu.org

Directions:

Hwy 168 east above Shaver Lake. Turn right at Tamarack Snow Park.

Stay on Rock Creek dirt road to the right (heading south). Camp Site 9S45 is 2.1 miles in. Turn right



LOOK WHAT WE DID!



Have you seen the cook trailer lately? If not, be sure to check it out at the Poker Ride in August. New graphics were installed by **Idea Printing and Graphics**. They did a wonderful job at a great price. Thanks **Doug and Jim**. If you need wraps, graphics or decals, **Idea** has it. They offer a full design team and do any type of printing, cards, letters, mailers. Thanks to **Idea** for what they did. They are located at 1921 E. Main St. Visalia, Ca. 93292 and can be reached at 559-733-4149.

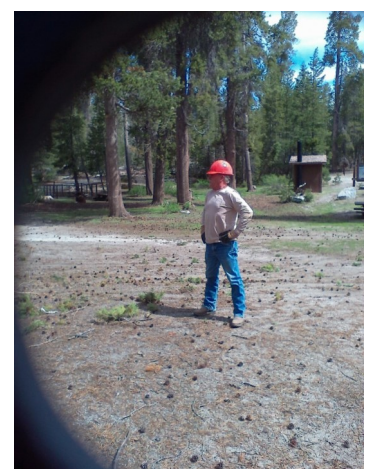
BIG MEADOWS

What a great time we had at Big Meadows work party. We were but a few, but we took on a huge project with a tree down in the middle camp. One thing we did have was plenty of fire wood. Thanks to **Jim Knabke, Pete Parkin, Duane Peverill, and Carol Kaminski** for what was accomplished. Sure was nice to beat the heat.



a
of

Pete-Joe-Jim-Carol



Big tree down in campground. Checking out what to cut. Cutting out the middle first and then the rest. Duane surveying the results.



Valentine Surprise
Dave Stamey Concert
February 2, 2018
Clovis Elks Lodge



Photo by Colleen Andrus

We wanted to let you in on a little **Valentine Secret** early so you can plan to take your sweetheart to a delightful evening concert. So mark your calendar and stay tuned for more details.

Music Lover's Delight, San Joaquin Sierra Unit will be a sponsor for a **Dave Stamey Concert** on the **2nd of February 2018**. Come one come all to the Clovis Elks Lodge to be entertained by Dave Stamey, a nationally known and recognized singer and songwriter. We are thrilled to have Dave sing and play for us that evening. More details will follow but plan to buy your tickets early as we plan to sell out. For details contact Ted Fischer SJSU Education Chair. 559-855-8599 tjfischer3@gmail.com

P.S. Hey guys this is a way to stay out of trouble at least once next year. Hint.....hint.....



2017 OFFICERS/DIRECTORS**President**

Joe Kaminski, 559-733-9170
kaminskiclan@gmail.com

Vice President

Duane Peverill, 559-908-3138
wpeverill@sebastiancorp.net

Secretary

Carol Kaminski, 559-733-9170
kaminskiclan@gmail.com

Treasurer

Pete Parkin 559-871-4500
ktzpaw@yahoo.com

DIRECTORS

Term Expires at end of year:

Ted Fischer, 559-855-8599 2017
tjfischer3@gmail.com

Cathie Walker, 559-283-1164 2017
walker1486@comcast.net

Carolyn Witt, 559-325-7876 2017
cawittbchc@hotmail.com

Randy Witt, 559-325-7876 2017
rcca33085@hotmail.com

Freddi Chrisman. 559-876-2416 2018

Jim Knabke, 559-299-3254 2018
jjknabke@comcast.net

Gary Van Sickle 559-288-0301 2018
gwvansickle@gmail.com

Susan Van Sickle 559-288-0301 2018
gwvansickle@gmail.com

COORDINATORS**Education Coordinator**

Ted Fischer, 559-855-8599
tjfischer3@gmail.com

Facebook Coordinator

Linda Knabke, 559-299-3254
lknabke2@yahoo.com

Membership/Mailing Coordinator

Jan Mikkelsen, 559-289-4911
jessecowboy@comcast.net

Public Lands Liaison

Joe Kaminski, 559-733-9170
kaminskiclan@gmail.com

Email Blasts/Newsletter

Carolyn Witt, 559-325-7876
awittbchc@hotmail.com

Web Wrangler

Duane Peverill, 559-908-3138
wpeverill@sebastiancorp.net

Shaver Lake Camp Host

Wanda Caradonna, 559-392-3534,
wandacaradonna@sbcglobal.net

Sunshine Chair

Pat Peverill, 559-824-1119
ppeverill@sebastiancorp.net

Past President

Greg Caradonna, 559-351-5190
gocaradonna@sbcglobal.net

**SJS Unit Fund Raisers
For Sale**

"There's a Mule Under My Saddle Cookbook" by Jean Brown of Idaho \$10.00

Hats \$15.00

Khaki with a maroon or forest green bill are embroidered with one horse, two mules and says
Backcountry Horsemen of California.

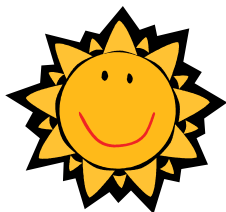
Scarf \$13.00

Scarves are a dark blue and are embroidered with one horse, two mules and says Backcountry Horsemen of California

Maroon Shirts \$37.00 (Extra Tall \$40.00). The shirts must be prepaid before the order. The logo on the left is BCHC
with San Joaquin Sierra Unit under the BCHC. Names added for \$5.00 in a group.

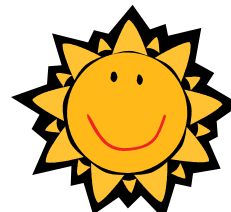
Horse First Aid.....great, informative quick reference \$25.00

Contact: Pete Parkin 559-871-4500 ktzpaw@yahoo.com &/or look for items at our rides and meetings.



Sunshine Corral

Greetings from the Sunshine Corral.
Hoping your rides are plentiful and safe!



We would like to welcome our newest members to our Unit:

Paige Stambach

Debra Lewis, Santa Cruz

Thank you and Appreciations to:

Doug and James Laber for Cook Trailer Decal

Hopefully everyone is healthy, in good spirits and staying cool. If you know of anyone in our unit that needs a cheerful pick me up let us know.

CALLING ALL MEMBERS

PLEASE!!!!

We are in need of **MORE HELP** from our membership to volunteer for different positions. Our unit will not be successful without our members joining in to share the load. Sign-up to help out for any number of things. This way you can meet other members, contribute to the betterment of your unit, not depend on a small group of the members to carry the weight and have a positive voice in the direction you would like to see the unit going.

There are soooo many things you can volunteer to help with just to name a few:

Historian (keeping track of what our unit does)

Christmas table decoration committee

Take Reservations for Christmas

Send in recipes to newsletter

Help on work parties

Be a Director for the unit

Need Advisors for the unit

Volunteer to help out at events, get your name on a list

Send in Articles for Newsletter

Help with Poker Rides

Organize rides

Purchase 2017 calendars

Volunteer to help out at Big Meadows

Need a new Newsletter Editor

Find donations for the unit events

This is what the officers and Board Members do for the unit and we need some help!

Please email or call Duane Peverill if you are willing to help out.

Duane Peverill, 559-908-3138

wpeverill@sebastiancorp.net



Backcountry Cooks



FROM PAT PEVERILL

HOBO Dinner for Camping

- 1 large potato, peeled & diced
- 1 large carrot, peeled & diced
- 1 medium onion, sliced
- 1 frozen hamburger patty

1 teaspoon seasoning salt, to taste

Directions

Place veggies and hamburger pattie in middle of large sheet of aluminum foil.

Sprinkle with seasoned salt.

Bring up the two long sides of the foil to meet above the food, fold (crimp) the foil several times until it is snug against the food.

Fold (crimp) the short ends of the foil several times until snug against the food.

This will seal the food in and prevent leakage.

Place package directly on hot charcoal and cook for about 15 to 20 minutes each side (or, you can place package in a 350 degree oven for 45 minutes to 1 hour).

The Lighter Side of the Barn

Barn Nonsense

Why is horse racing so romantic?

Because the horse hugs the rails, the jockey puts his arms around the horse and you can kiss your money goodbye!



Peter Parkin Pipeline



A word to the Wise. Just because your tires look good on your trailer, they might not be as safe as you think. Be sure to check out the condition of the tires before hitting the road. To be safe on the road, you should check your tires to make sure they are properly inflated and don't have leaks, bulges, excessive wear or damage. You should also check to see what year your tires were made. According to the **National Highway Traffic Safety Administration (NHTSA)**, tires can degrade over time. It is especially important to check the age of tires that aren't driven on regularly, such as spare tires and those on horse trailers. Here is a way to check the date of your tires.

Look for lettering on the sidewall of your tires. It will be near the center of the tire.

Find a code that begins with the letters "DOT," short for Department of Transportation, followed by a 10- to 12-character combination of numbers and letters.

Skip to the last three or four characters in the combination. These should all be numbers, directly after three or four letters.

Translate the first two numbers. These numbers indicate the week in which the tires were made. For example, "15" would signify that the tires were made the fifteenth week of the year.

Translate the last one or two digits. If there are three digits, the tires were made before 2000. An "8" would signify that the tire was made in 1998. All tires made in the 2000s use a two-digit code for the date. Therefore, "08" as the last two digits inform you that the tire was made in 2008.

One last thing. Check your Safety Chains and **MAKE SURE** they are not dragging on the ground. They can create sparks and cause a fire along the road. The last thing we need is another forest fire. Until we meet again. Happy Trails

2017 BCHC CALENDARS

We still have a number of **2017 BCHC Calendars** for sale from our state BCHC to sell. If every member buys just **ONE** calendar, we will be able to fulfill our obligation to the state.

Please call **Peter Parkin** or email him if you can help.

559-871-4500 or ktzpaw@yahoo.com

www.bchcsjsu.org

Make sure you check out our website for updates on the Home page, Calendar page, and Newsletters. We also have a Photos page of our latest activities.

If you have any photos send them to **Duane** at **wpeverill@sebastioncorp.net**.

www.bchcsjsu.org



Advertising Rates

Classified Ads

\$.10/word with a 20 word minimum (\$2.00), \$.50 a line after that.

Display Ad Rate per issue

Business Card Size, \$8.00,

1/4 page, \$20.00,

1/2 page, \$35.00,

Full Page, \$50.00

Prices are subject to change without notice. **All prices are for one month, due the 10th of the month.** Editor reserves the right to refuse inappropriate ads.

All paid Ads include an E-mail Blast to all members with current emails

Attention

Your SJS Unit Board of Directors would like to invite any of our members to attend the monthly Board meetings or General meetings. It is important all directors have the same opportunity to hear the information, concerns or suggestions you wish to share. We are volunteers doing our best to keep our Unit informed and working smoothly. Refer to the newsletter for the information regarding times and location of upcoming meetings.

Respectfully,

John Mikkelson and Greg Caradonna

Past Presidents



180 W. Bullard Ave.
Clovis, CA 93612

Your Full Service Realtor
Jessica Gabrielson
Realtor, GRI, SRES, SFR, ASP

559.905.7724
Office 559.321.6040
Fax 559.321.6044
jgabrielson@guarantee.com
DRE#01338726



"I don't horse around when it comes to selling your property"

"Travel Advantage"

Dear BCHC Members

Check out the latest edition of "Travel Advantage", @ www.ytbtravel.com/bchc a travel newsletter full of terrific deals from YTB, our BCHC travel partner. The newsletter is chock full of great ideas for anyone's next getaway! You can download an icon to your computer desktop for instant connection to the BCHC Getaway website.

Please forward "Travel Advantage" newsletter to your friends and family and other BCHC supporters. The more we get the word out, the more people will use the BCHC Getaway travel site to take advantage of great rates on hotels, flights, rental cars and other travel-related items, the more BCHC will earn for our Treasury!!

Please do not hesitate to contact me if you have any questions about the travel site, how it works or what BCHC earns by participating in this great opportunity. Thank you for supporting and promoting BCHC Getaway!!

C.J. Hargreaves
BCHC Editor/Travel Site
Coordinator
[cjohargreaves@verizon.net](mailto:cjhargreaves@verizon.net)





Board Meeting May 3, 2017
Elks Lodge, Clovis, Ca.

Call to order: 6:30

Roll Taken: President: Joe Kaminski, Vice President: Duane Peverill, Secretary: Carol Kaminski,
Treasurer: Pete Parkin
Directors., Carolyn Witt, Ted Fischer, Fredi Chrisman, Randy Witt

Minutes review and approved: Ted F. 1st, Duane P. 2nd

Correspondence: Money memorial from Diana Sorenson, Mid Valley Unit-road closures, PO Box renewal
COMMITTEE REPORTS:

Education: News release- Passes can now be purchased on-line(trial period), BCHC to purchase PPEs for clubs, Joe to check on chap size, need to purchase helmet and 1 aide kits, Sierra NF-scoping period for Granite Creek toilet project. LNT national looking for hot spots needing attention(lectures or discussions), snow park needs attention after snow melt,(possible club project), Summer trying to organize free CPR and 1st aide-maybe Peggy Riddle will teach, Ted unable to reach Dave Stamey yet. Opportunity- May 11 Prather Pioneer Day- would like pack string and LNT, maybe sawyers also. 1/2 day, Ted is contact for event.

Membership: no new members.

Newsletter: Articles by May. 20. Jan- Shoot your heart out, Desensitizing and parade ,Jan. April 6-8, 2018 Rendezvous Hensley poker ride- Duane,

Public lands: Chamberlain Camp-no grazing until Aug.1, 18 year battle w/Fish and Game rejected horned toad on endangered list. Looking to introduce wolves. Checking on habitat and prey,

Sunshine corner: Cara Peterson on wrist surgery and loss of Snip her horse, 5 thank yous sent for memorial donations, Sue VS on the loss of her mom, Big Meadows donation from Cumorah Riders-thank you, Al Gould thank you for donation, Lois Blough for broken wrist.

Shaver Lake:

OLD BUSINESS:

2016 events: Big Meadows-Meeting scheduled May 17 with Kyle and Carol. Wrap for cook trailer-done By-laws Ted, Randy and Carolyn-no meeting yet. Events: Clinic, Parade, Poker Ride- \$1,241 income, expenses\$568 profit \$673 31 riders, blast to go out to cancel Jose Basin . 2018 Rendezvous April 6-8. Big Meadows-June work party, Edison-maybe late June, Debbie MD needs resupply and set up this summer. Tamarack ride to become Diana Sorenson Memorial Ride-best ride ever buckle to be given. Ted to acquire name and # of silversmith, Tack sale General Meeting May 13. Tri-tip, beans ,salad, rolls, drinks provided. Others to bring desserts. Montana de Oro-July, business cards to be ordered soon, Fundraiser dinner- info still needed from Dave Stamey, John Pemberton-music. Possible use of Debbie Davis facility. Storage shed to be moves May 23 at Witts.

NEW BUSINESS

Meeting adjourned: 8:05. Joe 1st., Duane 2nd.



Board Meeting May 31, 2017
Elks Lodge, Clovis, Ca.

Call to order: 6:30

Roll Taken: President: Joe Kaminski, Vice President: Duane Peverill, Secretary: Carol Kaminski,
Treasurer: Pete Parkin
Directors,. Carolyn Witt, Ted Fischer, Randy Witt, Fredi Chrisman

Minutes review and approved: Ted F. 1st, Randy Witt 2nd

Correspondence. DMV \$10.00 (water trailer or cook trailer), \$125.00 Diana Sorenson memorial, \$500 grant from BCHA,

COMMITTEE REPORTS:

Education.

Membership: no new members.

Newsletter.

Public lands. Check with JR- Sand Flats, Red, Coyote road needs repair

Sunshine corner: up to date

Shaver Lake: wet camp. Wanda to check on

OLD BUSINESS:

Big Meadows-Meeting scheduled May 17 positive, need host for three weeks in August, Duane to make camp host sign, granite available-need tractor. Forest Service to pay for trash pick-up, BCHCSJSU to pay for toilet pumping. Wil derness Ranger attended meeting- asked us to pack in/pick up trash on return pack trip. Asked for budget of \$3,500 for general maintenance(tractor rental, toilet pumping, supplies). Fredi 1st, Randy 2nd. Passed. Handout (tri-fold) would be nice for information on resources around area (hot spot for cell service, emergency numbers, trails, etc.) Tractor to be rented on Thurs. Duane to haul.

Write-up by Joe for newsletter on cook trailer wrap. Pictures needed.


By-laws Ted, Randy and Carolyn-no meeting yet.

2017Events: Check on permit for Tamarack Poker Ride. Edison work party- June24-30,. July 5- board meeting. Tentative Beginner Pack Trip Aug. 25-27. August General Meeting-maybe Jerry Jones- Ted Fischer to contact. October 25 at Yosemite Falls Meeting 6:30. Table fund raising dinner.

NEW BUSINESS

Meeting adjourned: 7:30. Carolyn 1st, Fredi 2nd.

You can go to BCHCalifornia.org to become a member or fill out this form and send it in.

<p>Backcountry Horsemen of California</p> <p>MEMBERSHIP APPLICATION</p> <p><input type="checkbox"/> New <input type="checkbox"/> Renewal or <input type="checkbox"/> Change (Indicate change)</p>		<p>MAIL TO: BCHC Membership 1280 State Rt 208 Yerington NV 89447</p>																									
<p>PARENT Unit Affiliation: (Select and CHECK a Unit as your Affiliation)</p> <table style="width: 100%;"> <tr> <td><input type="checkbox"/> Antelope Valley</td> <td><input type="checkbox"/> Kern Sierra</td> <td><input type="checkbox"/> North Bay</td> <td><input type="checkbox"/> San Geronimo Pass</td> <td><input type="checkbox"/> Sierra Freepackers</td> </tr> <tr> <td><input type="checkbox"/> Eastern Sierra</td> <td><input type="checkbox"/> Lake-Mendo</td> <td><input type="checkbox"/> Redbank Riders</td> <td><input type="checkbox"/> San Joaquin Sierra</td> <td><input type="checkbox"/> Sutter Buttes</td> </tr> <tr> <td><input type="checkbox"/> High Country</td> <td><input type="checkbox"/> Los Padres</td> <td><input type="checkbox"/> Redwood</td> <td><input type="checkbox"/> Santa Ana River</td> <td><input type="checkbox"/> Top of the State</td> </tr> <tr> <td><input type="checkbox"/> High Sierra</td> <td><input type="checkbox"/> Mid Valley</td> <td><input type="checkbox"/> San Diego</td> <td><input type="checkbox"/> Sequoia</td> <td></td> </tr> <tr> <td><input type="checkbox"/> Kern River Valley</td> <td><input type="checkbox"/> Mother Lode</td> <td></td> <td><input type="checkbox"/> Shasta Trinity</td> <td></td> </tr> </table>			<input type="checkbox"/> Antelope Valley	<input type="checkbox"/> Kern Sierra	<input type="checkbox"/> North Bay	<input type="checkbox"/> San Geronimo Pass	<input type="checkbox"/> Sierra Freepackers	<input type="checkbox"/> Eastern Sierra	<input type="checkbox"/> Lake-Mendo	<input type="checkbox"/> Redbank Riders	<input type="checkbox"/> San Joaquin Sierra	<input type="checkbox"/> Sutter Buttes	<input type="checkbox"/> High Country	<input type="checkbox"/> Los Padres	<input type="checkbox"/> Redwood	<input type="checkbox"/> Santa Ana River	<input type="checkbox"/> Top of the State	<input type="checkbox"/> High Sierra	<input type="checkbox"/> Mid Valley	<input type="checkbox"/> San Diego	<input type="checkbox"/> Sequoia		<input type="checkbox"/> Kern River Valley	<input type="checkbox"/> Mother Lode		<input type="checkbox"/> Shasta Trinity	
<input type="checkbox"/> Antelope Valley	<input type="checkbox"/> Kern Sierra	<input type="checkbox"/> North Bay	<input type="checkbox"/> San Geronimo Pass	<input type="checkbox"/> Sierra Freepackers																							
<input type="checkbox"/> Eastern Sierra	<input type="checkbox"/> Lake-Mendo	<input type="checkbox"/> Redbank Riders	<input type="checkbox"/> San Joaquin Sierra	<input type="checkbox"/> Sutter Buttes																							
<input type="checkbox"/> High Country	<input type="checkbox"/> Los Padres	<input type="checkbox"/> Redwood	<input type="checkbox"/> Santa Ana River	<input type="checkbox"/> Top of the State																							
<input type="checkbox"/> High Sierra	<input type="checkbox"/> Mid Valley	<input type="checkbox"/> San Diego	<input type="checkbox"/> Sequoia																								
<input type="checkbox"/> Kern River Valley	<input type="checkbox"/> Mother Lode		<input type="checkbox"/> Shasta Trinity																								
<p>DCTR (your Membership Number): _____ (For new memberships, will be assigned by Membership Chair)</p>																											
<p>MEMBER'S NAME—No Business Names; Print Clearly _____ SPOUSE / Co-MEMBER'S NAME—MUST SHARE SAME ADDRESS _____</p>																											
<p>Street Address / PO Box _____</p>																											
<p>City _____ State _____ Zip Code (full 9 digits, if known) _____ Area Code _____ Phone _____</p>																											
<p>Email Address: _____ (please print legibly)</p>																											
<p>Donation to BCHC Education Fund (tax deductible) \$ _____</p>																											
<p>Total Enclosed: \$ _____ Check No. _____</p>																											
<p>Parent Unit Membership Types: (CIRCLE ONE)</p> <p>Individual \$50 Family \$60 - 2 year Individual \$90 - 2 Year Family \$110 - 3 Year Individual \$125 - 3 year Family \$150 Young Adult (18-25 years old) \$15 - Benefactor \$100 - Patron \$250 - Mt Whitney \$500</p> <p>Associate Memberships: AN ADDITIONAL \$15.00 PER UNIT IS ADDED TO YOUR PARENT UNIT DUES. ASSOCIATE MEMBERSHIP UNIT AFFILIATIONS MAY NOT BE FOR THE SAME UNIT AS YOUR PARENT UNIT.</p> <p>Associate Membership for: _____ \$15.00/unit Unit Name (from above list) _____</p> <p>Associate Membership for: _____ \$15.00/unit Unit Name (from above list) _____</p> <p>Please write additional choices on back.</p> <p style="text-align: center;">Please clip form along dashed lines and keep the below portion for your records</p>																											

Parent BCHC Membership Types

Individual, Family (Shared*), Benefactor, Patron, and Mt Whitney.

A Parent Membership is affiliated with a single Local Unit. BCHC members may NOT hold more than one active Parent Membership.

* A SHARED Membership is for two adults with differing last names who share a common address.

Associate Memberships

These special Memberships are only available to persons already holding Parent BCHC Membership. No one may sign up for an Associate Membership without 1) having registered one of the Parent Membership types, and 2) having selected Parent Unit affiliation.

☐ You may sign up for as many Associate Memberships as you like.

☐ Associate Memberships may be initiated at any time during the term of your Parent Membership.

☐ Associate Memberships must expire concurrently with the Parent Membership and are renewable only at the time of renewal of the Parent Membership.

Complete information regarding
BCHC Membership is available on the
MEMBERSHIP pages at BCHCalifornia.org
or call (775) 463-3634

KEEP FOR YOUR RECORDS

I submitted an Application Form for a new –

<input type="checkbox"/> Individual Membership	\$ 50.00
<input type="checkbox"/> Family (Shared) Membership	\$ 60.00
<input type="checkbox"/> Young Adult (18-25 years old)	\$ 15.00
<input type="checkbox"/> 2 Year Individual	\$ 90.00
<input type="checkbox"/> 2 Year Family	\$ 110.00
<input type="checkbox"/> 3 Year Individual	\$ 125.00
<input type="checkbox"/> 3 Year Family	\$ 150.00
<input type="checkbox"/> Benefactor Membership	\$ 100.00
<input type="checkbox"/> Patron Membership	\$ 250.00
<input type="checkbox"/> Mt Whitney Membership	\$ 500.00

On that form, I also requested –
_____ Associate Memberships \$ _____

My Total Remittance: \$ _____

My Check Number: _____

Date Mailed: _____

Verification of BCHC membership is available via (1) BCHC unit president's reports (2) BCHC membership chair reports (3) a self addressed stamped envelope submitted with this form or (4) a valid email address.



San Joaquin Sierra Unit

P.O. Box 25693

Fresno, CA 93729-5693



Objectives & Purpose of the Backcountry Horseman of California

From the BCHC Bylaws

- To improve and promote the use, care and development of California backcountry trails, campsites, streams and meadows; to advocate good trail manners.
- To promote the conservation and utilization of our backcountry resources in concert with livestock transportation.
- To keep the backcountry trails and forage areas open to horseman on all public lands.
- To keep current information before the Corporation membership and its local Units regarding new legislation or management plans related to government regulations of the backcountry.
- To support or oppose new proposals, plans and restrictions as related to the interest of horsemen and those persons interested in recreational stock use and enjoying the backcountry.
- To promote the interest of people who, due to health or physical factors, need transportation other than by foot on backcountry trails.
- To promote public awareness and interest in the historical aspect of horsemen and stock in the backcountry and to help educate backcountry users on the ways to use the trail and foraged in a manner that conserves the backcountry resources.
- To assist in keeping the public informed of the vital need for a clean backcountry.
- To promote a working relationship with and keep the work and interests of the Corporation before our local, state and federal officials.
- To assist in the formation and continuation of local Units to carry out these purposes.