



San Joaquin Sierra

Hoof Prints



October-November 2014

Issue 6

San Joaquin Sierra Unit, BCHC
PO Box 25693
Fresno, CA 93729-5693

Email- membership@bchcalifornia.org (membership email only).
On the WEB: <http://www.bchcsjsu.org> (SJS unit) or <http://www.bchcalifornia.org> (State)

Max & Irene Cochran
 Newsletter Multiple
 Award Winner

1st - 2004
 1st - 2005
 3rd - 2006
 2nd - 2007
 2nd - 2008
 2nd - 2009
 2nd - 2010
 2nd - 2011
 2nd - 2012



Concerned Men and Women Dedicated to Gentle Use of California Trails and Backcountry

Can you guess who this is?
 He started young and is still riding.



PRESIDENT'S MESSAGE

School is back in session, the holidays are soon to come and leaves are starting to change color. This month we saw another successful poker ride. After three years **Char and Wanda** are ready to step down. We want to say a big **Thank You** to both for making the poker ride a success and something we can build upon. If you would be interested in taking this on please let a board member know.

It is back on! Many are excited as we looked to have our first trail trials scheduled for November 15th. Watch your email for a flyer or contact Cindy Mueller to sign up.

Our prayers and thoughts are with the families of Cathie Walker, Cindy Mueller and Peggy Riddle, Alan Fry and Cara Peterson for their recent losses.

We had a great turn out for the **Big Meadows** ride and were privileged to have **Ron Jefferson** come up one night to entertain us. We were very fortunate to enjoy his talents.

Many things are going on behind the scenes. We have been involved with the new **Sierra Forest plan, the Sequoia Park alternatives, the San Joaquin Gorge, and the Dinky Collaborative** continue. Thanks to those who have been involved and commented on these issues.

On a personal note I have been riding the Sierras since about 1959, especially the Shaver Lake area. I appreciate all the trails in the forest and also available on Edison property. I hope to see this riding area stay accessible for generations to come. Hope to see you at the election ride at Riddle Ranch in October and the Christmas dinner-dance in December.

Remember to stay in the saddle, the ground is hard.
 Joe Kaminski, President



In this Issue

Page 1	President's Message
Page 2	2014 Calendar and Sunshine Corner
Page 3	Starlight Evening Ad
Page 4	Officers and Coordinators
Page 5	Head 'Em Up, Move 'Em Out
Page 6	Shaver Lake and Ads
Page 7	Backcountry Cook's Corner
Page 8-9	Big Meadow Work Party-Camp Out
Page 10	Barnyard Feed and Supply Ad
Page 11	Shaver Lake Poker Ride
Page 12	Lucky Calendar/Raffle Tickets and Wilderness Act
Page 13	How Horses Move Their Bodies
Page 14	Riddle Ranch Ride and Elections Flyer
Page 15	Wilderness Riders at Chukchansi
Page 16	Annual Christmas Party Flyer
Page 17	Membership Form

2014 Calendar

Board Meetings are on the **1st Wednesday** of the month. All members are welcome to attend. Board meetings start at 6:30 pm at the Clovis Elks Lodge, 535 Woodworth Ave. (Bullard & Woodworth).

Calendar & Ride schedule is on-going, and new events and rides will be published when confirmed. *Note: dates and events are subject to change or cancellation; **calling the contact person is recommended** or checking **www.bchc.org***

October 18 **General Meeting Riddle Ranch Ride and Elections** Cindy Mueller 559-283-1174

Oct. 30-31 & Nov. 1 Draft Horse and Mule Sale, Tulare

November 15 **Trail Trials are reinstated: call Cindy Mueller 559-283-1174**

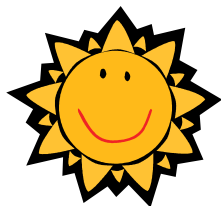
December 13 **Christmas Party** Cathie Walker 559-283-1164
Call Cathie if you can help with the preparations.

Remember to check for any Unit updates at our Web Site:

www.bchcsjsu.org for the San Joaquin/Sierra Unit,

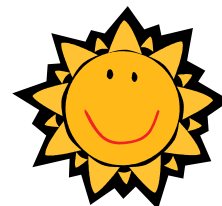
www.bchcalifornia.org for the State Web Site

Please contact any Board Member if you would like to host a ride or activity.



The Sunshine Corner

By Becky J. Balistreri
beckybala@hotmail.com



WELCOME NEW MEMBERS:

Carla Hawks, Fresno; Guy Adams, Clovis; Jason S. Caudell, Visalia; Bill Dooley, Fresno; Mary Dutra, Sanger;
Guy and Carrie Adams, Clovis; Tiffany Bechinor, Madera

We are always excited to welcome our new members.

Remember to invite others you know who enjoy their equine friends and the back country to join us too!

New members may join at any ride.

MEMBER NEWS:

Condolences to our loved Members and Their Families :

Kathy Walker, Cindy Mueller and Peggy Riddle, lost their mother , grandmother and friend, Hazel Riddle.

Alan Fry lost his father, Harry Fry.

Cara Petersen's father passed away.

Get well wishes go out to Art Riesgo and Wanda Caradonna, who had surgery on her wrist.

Congratulations to Patricia Peverill for getting first place at the Central Valley Saddle Club Trail Trials.!

Please let us know if there are any news of our members.

SATURDAY OCTOBER 11TH

It's the last great outdoor evening event of the season and you have to

BE THERE!

Please join us at the new Starlight Grove venue for an enchanted evening of music, food and entertainment!



The music alone is worth coming out for featuring 3 of the valley's top live bands playing under the stars and twinkling lights of the valley's most beautiful new outdoor country event venue, www.starlightgroveevents.com 559 307-0789.

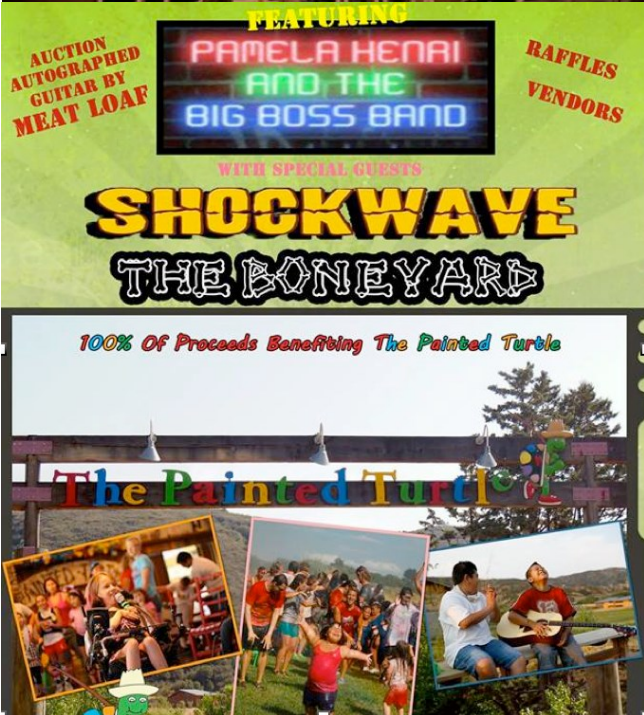
Enjoy great food, wine tasting, beer garden and ambiance lounging in your favorite portable chair or dance the night away on the huge dance floor surrounding the bands as they perform.

The best part of all is the cause! All auction, raffle and ticket proceeds provide year round enrichment programs and unforgettable camp experiences for children with chronic and life threatening illnesses.

This is provided free of charge to the families through [The Painted Turtle](http://ThePaintedTurtle.org) ([thepaintedturtle.org](http://ThePaintedTurtle.org)) All ages welcome, kids 12/under are free. Tickets are available online or at the door for \$20.

www.ticketriver.com

Doors open 5:00 PM
13616 E. BULLARD AVE. CLOVIS CA
93619



2014 OFFICERS/

DIRECTORS

President

Joe Kaminski, 559-733-9170
kaminskiclan@gmail.com

Vice President

Randy Witt, 559-325-7876
rcca33085@hotmail.com

Secretary

Cindy Mueller, 559-283-1174
Chipzipnappy@aol.com

Treasurer

Pete Parkin 559-871-4500
ktzpaw@yahoo.com

DIRECTORS

Term Expires at end of year:

Carol Kaminski, 559-733-9170
kaminskiclan@gmail.com 2014

Fredi Chrisman, 559-876-2416 2014

Debbie McFarran, 559-638-1297
Alphabe1@comcast.net 2014

Jan Mikkelsen, 559-289-4911
jessecowboy@comcast.net 2014

Jim Knabke, 559-299-3254
jjknabke@comcast.net 2015

Duane Peverill, 559-908-3138
wpeverill@sebastiancorp.net 2015

Art Riesgo, 559-905-3854
niccocomputer@msn.com 2015

Carolyn Witt, 559-325-7876
cawittbchc@hotmail.com 2015

COORDINATORS

Education Coordinator

Ted Fischer, 559-855-8599
tjfischer3@gmail.com

Facebook Coordinator

Linda Knabke, 559-299-3254
lknabke2@yahoo.com

Membership/Mailing Coordinator

Jan Mikkelsen, 559-289-4911
jessecowboy@comcast.net

Public Lands Liaison

Joe Kaminski, 559-733-9170
kaminskiclan@gmail.com

Email Blasts/Newsletter

Carolyn Witt, 559-325-7876
cawittbchc@hotmail.com

Web Wrangler

Duane Peverill, 559-908-3138
wpeverill@sebastiancorp.net

Shaver Lake Camp Host

Wanda Caradonna, 559-392-3534, wandacaradonna@sbcglobal.net
Char Meier, 559-297-1290
shaverider@gmail.com

Sunshine Chair

Rebecca Balistreri, 559-905-3854, beckybala@hotmail.com

Advisors

Cathie Walker, 559-283-1164
walker1486@comcast.net

Past President

Greg Caradonna, 559-351-5190
gocaradonna@sbcglobal.net



www.bchcsjsu.org

Make sure you check out our website for updates on the Home page, Calendar page, and Newsletters. We also have a Photos page of our latest activities.

The creative genius of **Duane Peverill** our new Web Wrangler.

If you have any photos send them to Duane at wpeverill@sebastiancorp.net.

www.bchcsjsu.org

Advertising Rates

Classified Ads

\$.10/word with a 20 word minimum (\$2.00), \$.50 a line after that.

Display Ad Rate per issue

Business Card Size, \$8.00,
1/4 page, \$20.00,

1/2 page, \$35.00,
Full Page, \$50.00

Prices are subject to change without notice. **All prices are for one month, due the 10th of the month.** Editor reserves the right to refuse inappropriate ads.

All paid Ads include an E-mail Blast to all members with current emails

Calling ALL Members!

Remember to please send an email to
Chip Herzig:
chipherzig@gmail.com

Let him know how you want your State
Newsletter:



By E-mail
Or
US Postal



The *purpose of this publication* is to keep its members informed on important issues that affect all horsemen and to inform the membership on up-coming events within the unit. The views and opinions expressed in this newsletter are those of the editor & authors and not necessarily shared by BCHC.

NEWSLETTER EDITOR

Carolyn Witt
6208 Amber
Clovis, CA 93619
559-325-7876
cawittbchc@hotmail.com

Hoof Print 2014 Deadlines

Advertising, announcements, pictures and other copy must be received by editor by the deadline listed below.

Deadline Publication

January 20	February/March
March 20	April/May
May 20	June/July
July 20	August/September
September 20	October/November
November 20	December/January

Attention

Your SJS Unit Board of Directors would like to invite any of our members to attend the monthly Board meetings or General meetings. It is important all directors have the same opportunity to hear the information, concerns or suggestions you wish to share. We are volunteers doing our best to keep our Unit informed and working smoothly. Refer to the newsletter for the information regarding times and location of upcoming meetings.

Respectfully,

John Mikkelsen and Greg Caradonna

Past Presidents

HEAD 'EM UP—— MOVE 'EM OUT

I just want to give the members a heads up. The first week of October you will receive an email or notification on the web and Facebook about a survey the unit is conducting. It would be deeply appreciated if you would take the time to answer the 25 question on the survey to the best of your ability. Be honest and tell us how you feel. This is an attempt for the board to gather information from our members so we can plan activities and give the members the things they are looking to gain from being members of BCHSJSU.

It is vital that we get this survey back. I have made it as easy as possible for you to fill it out. You will receive a link in your email that directs you to the survey. Also, I hope to have a link on Facebook and our webpage, bchcsjsu.org, so you can access the survey. If you can't do any of those methods let me know and I will get you a hard copy of the survey. The survey will be on a limited time frame and can only be done during that time. It will be available the first three weeks of October. I know you are all busy and your time is valuable. But the survey is a great way for us to enhance the club. Please take the time to do the survey.

Thank you in advance. If you need information you can contact me at wpeverill@sebastiancorp.net or leave a message on my phone. 559 908-3138.

Let's keep the club moving forward.
William Duane Peverill, Director



Trips away from home?



Learn how to pack?



Rodeo?



Work Parties?



Group Trail Rides?



Training sessions?



Halloween.....John Deere Style

The Shaver Lake Day Use & Facility, call for reservations

The following procedures have been established for the continuity of the facility. When planning a day/camping outing it is necessary to contact one of the members listed below for the gate combination. For security reasons the combination will be changed throughout the season. The camp is available to our Unit members for day use and/or camping with your stock. The camp is set up with three large stock pens and three camp sites offered on a 1st come 1st served basis. The three picnic tables and fire pit are located in a shared area. It is necessary for you to furnish water for personal use and stock use. **The pens must be cleaned of hay/manure after each use or a fee will be assessed for clean up;** remember our “Leave No Trace” policy. There is no potable water on site; however a porta-potty is on site for our human needs.

Fee schedule per membership:

Day Fee \$5 or Camping Fee \$10 per night

For reservations contact: **Wanda Caradonna**
559 392-3534 or **Char Meier** 559 297-1290

The temporary entry permit from Edison will expire **October 31st**. The campground will remain open, weather permitting until then. Reservations are still required for day or overnight usage. There will not be a work party to dismantle the campground, however watch for a spring work date as we will need some repairs after the winter.



180 W. Bullard Ave.
Clovis, CA 93614

Your Full Service Realtor
Jessica Gabrielson
Realtor, GRI, SRES, SFR, ASP

559.905.7724
Office 559.321.6040
Fax 559.321.6044
jgabrielson@guarantee.com
DRE#01338726



"I don't horse around when it comes to selling your property"

"Travel Advantage"

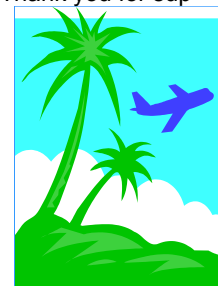
Dear BCHC Members

Check out the latest edition of "Travel Advantage", @ www.ytbtravel.com/bchc a travel newsletter full of terrific deals from YTB, our BCHC travel partner. The newsletter is chock full of great ideas for anyone's next getaway! You can download an icon to your computer desktop for instant connection to the BCHC Getaway website.

Please forward "Travel Advantage" newsletter to your friends and family and other BCHC supporters. The more we get the word out, the more people will use the BCHC Getaway travel site to take advantage of great rates on hotels, flights, rental cars and other travel-related items, the more BCHC will earn for our Treasury!!

Please do not hesitate to contact me if you have any questions about the travel site, how it works or what BCHC earns by participating in this great opportunity. Thank you for supporting and promoting BCHC Getaway!!

C.J. Hargreaves
BCHC Editor/Travel Site
Coordinator
cjhargreaves@verizon.net



INTRODUCING A NEW REVIVED SECTION OF THE NEWSLETTER

"Back Country Cooks Corner"

Old Settlers Baked Beans (Reunion Beans)



Ingredients

1/2 Lb Ground beef
1 can Red Kidney Beans
1 can Pork and Beans
1 can Butter Beans
Bacon
Onion

Brown Sugar, White Sugar, Barbecue Sauce, Ketchup, Prepared Mustard, Molasses

Directions:

1/2 lb Ground beef Brown and Drain
Add 1 can Red Kidney Beans(drain and rinse)
Add 1 can Pork and Beans(drain some)

Mix together:

1/3 cup brown sugar
1/3 cup white sugar
1/4 cup Barbecue Sauce
1/4 cup Ketchup
1 TBL spoon Prepared Mustard
2 TBL Spoons Molasses

Stir into Bean Mixture

Pour into casserole dish and stir in the following carefully.

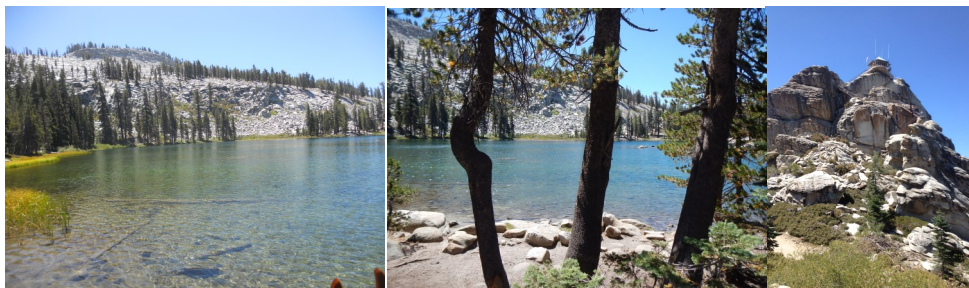
1 can Butterbeans (Drained/Rinse)
1/2 LB Bacon Chopped (Raw or Cooked)
1 med onion chopped
Salt and Pepper to taste.

Bake at 350 degrees for 1 hour. This can also be done in a Dutch Oven.

Submitted By: Pat Peverill

If you would like to share a dessert , salad , main course, casserole, drink, anything to consume, please send them to cawittbhc@hotmail.com. I know I'm always looking for something yummy to try.





Big Meadow Work Party Camp Out

The San Joaquin Sierra Unit comes through again. August 17 through the 24 Big Meadows Horse Camp was closed down while the unit completed their annual maintenance and improvements. The unit has been taking care of this Horse Camp for many years and has made it one of the best places for you and your equines to visit. The projects for this year were completed by a small work party, but they had to work their tails off. There are projects scheduled for next year and we are looking forward to a larger work crew so we can get these much needed projects completed. Keep your eyes and ears open so you will know when the dates are scheduled. It was really great to have the camp closed to the general public so the work could be done without having to work around other campers. Thanks to **Joe** for making this happen. Thanks to **Don Dutra** a new member for joining the work party.

On Friday other members arrived to enjoy the beautiful camp and the surrounding area. Friday night dinner and breakfast on Saturday and Sunday were provided by the units **Galloping Gourmets**. Again, one cannot begin to express how great the food was at all the meals. When you camp with the San Joaquin Sierra Unit it is like dinning at a 5 Star restaurant with the beauty of God's creation. Thanks to all the Cooks that jumped in to help out and clean up after all the meals. You all were GREAT!!!! Saturday night was a potluck dinner followed by our General Meeting around a campfire. A perfect meal and the perfect atmosphere for a meeting.

During the weekend everyone had the opportunity to take short or long rides out from the camp. You could ride in large or small groups or alone. Just a few of the sites to ride to are; Jenne Lake, Weaver Lake and Buck Rock Lookout. Big Meadow Horse camp is a great place. It has 16 individual corrals around 5 main campsites with campfire rings. There is room for more than one rig per camp. Camping is on a first come first serve basis. For your convenience there is a Pit Toilet. There is a seasonal creek that runs through camp but usually dries up early. Plan on brining water for you and your equine friend. If you have never been there.....YOU NEED TO GO!! It is just a little under 2 hour drive form Fresno.

Happy Trails

William and Pat Peverill





"Dishes at home and now dishes in the forest, really!?"



"You need a drink, I don't need a bath!"



"OMG, where did I leave my horse?"



"It's 5:00 somewhere!"

Barnyard Feed & Supply

**Full Line of Livestock Feed,
Pet Food and Supplies
New and Used Tack**



**847 N Pleasant Ave.
Fresno, CA 93728**

559-486-7333





Shaver Lake Poker Ride

Submitted by Greg Caradonna

I want to start by thanking **Char Meier and Wanda Caradonna** for their time and commitment to this event over the last three years. Each year they have gone beyond the call of duty to make this event successful. Additionally, I want to thank the crew that drove up Thursday night and Friday morning so we could chalk the parking lot and mark the trails on Friday.

Rigs started showing up bright and early, and the participants were graced with the cool mountain air (I think it was 103 in Fresno, and it was only 75 degrees at Shaver, which included a cool afternoon breeze - you could not have asked for a nicer day).

The ride started out at the old Gun Club, and per **Duane Peverill**, the ride totaled 8.1 miles, and included two dry stream bed crossings with the final destination being Vista Point. I rode a majority of the trail three times that weekend and each time the ride was as pleasurable as the first. What a great place to ride and it's only 45 minutes from Fresno. We could not have staged this event if it was not for **Southern Cal Edison-Shaver Lake Forestry Division** – Thank You.

We had roughly 32 participants and crew members this year, and **Alexander Mills**, who just turned 30 and only decided to come up at the last moment, won the low ball hand and walked away with \$70.00, while **Fernando Fernandez** won the high hand. The other notable winner was **Jan Mikkelsen**, as her last minute raffle tickets won her \$100 gift certificate to the Lime Lite Restaurant.

There were several companies that donated to the event this year such **A-1 feed, Tractor Supply**, and **Aces All Care Equipment and Supplies**, where Cindy Mueller works, to each of them a huge THANK YOU! In closing, thanks to all that participated, the excitement of these events is having you there!



Greg Caradonna and Pete Parkin



Duane Peverill and Masked Bandit



Jan Mikkelsen and Pete Parkin



Art Riesgo and Don Dutra



Wanda Caradonna

SAVE THE DATE !!!

JOIN IN...
A CELEBRATION
IN HONOR OF THE
**50th Anniversary of
the Wilderness Act**

WILDERNESS
50 years
1964-2014
**YOURS:
TO ENJOY
TO PROTECT**

October 10 - 12, 2014

Tehama District Fairgrounds
Red Bluff, Calif.

Participating partners include: U.S. Forest Service; Bureau of Land Management; National Park Service; Backcountry Horsemen of California; Pacific Crest Trail Association; and more to come...

POC: Heidi Perry
hperry@fs.fed.us

LUCKY YOU, LUCKY ME, LUCKY CALENDAR

BCHC's **2015 LUCKY CALENDARS** are not just calendars. They can win you **BIG** money again and again. This raffle project is a great fund raiser for our unit. When all raffle tickets/ calendars are sold, the profit realized will be just shy of \$40,000. The net proceeds will be split 50/50 between BCHC California and our individual units. "This may be the easiest and best fund raiser we have every had," according to Karen Kimbel, the Idaho BCHC calendar coordinator.

All the San Joaquin Sierra members have to do is to convince friends, relatives and co-workers to make a \$25 donation to help keep America's trails open for equestrian use. When your friend gives the donation they receive this beautiful **Lucky Calendar 2015** and a **raffle ticket**. The raffle ticket stub is put into a hopper with 213 chances to win cash throughout the year. Every Monday, Wednesday and Friday of the year the raffle ticket holder may win at least **\$50**. Every Saturday the ticket holder may win at least **\$100**. On the first day of January 2015 the prize is **\$1,000**. On the last day of 2015 the prize is **\$3000**. **BUT!**, each time you win your cash, your ticket is put back into the hopper for another chance to win. So get your calendar from any board member, whose number is in our Newsletter or on our website (bchcsjsu.org) or come to the *General Meetings* to pick one up. If you want that **LUCKY RAFFLE TICKET** call **Randy Witt** at **559-325-7876**. And he will get it to you!!!

\$\$\$\$\$\$\$\$\$



How Horses Move Their Bodies and How Riders Can Help Them – Chelsie Kallestad chelsienaturalhorsemanship.com PART 1 –

“Why does this relate to me? I am not showing my horses, I am a pleasure rider.”

Horses are not born knowing how to carry a rider's weight. Young horses move almost perfectly without a rider on their back. Then when we get on them our weight and position in the saddle can affect their movement and way of carrying themselves. If we do not help our horses carry our weight better, then over a long period of time you will see muscle development change in the horse for the worse, you will see front leg lameness and your horse's body will eventually break down faster than it would have if you would help them with body posture. We can easily help our horses to stay healthy and working for a long time, well into their 20s if you know how to better your horse's way of carrying themselves and us.

The first thing I am going to talk about is **Foot Falls** and how they relate to what we are asking our horse to do. Foot Falls are how the horse moves his feet. What foot goes when and then what one comes next. “Why are they important for me to know them?” Here are some reasons why foot falls are important to know: If we know when our horse is going to be moving his right front foot we can better ask him to place it where we want it. It is like if you put all your weight on your right foot and then tried to pick your right foot up, you can't do it! You have to take the weight off your right foot to pick it up. It is the same way for the horse. If we are asking our horses to turn on the haunches to the right would it not make sense to ask our horses to start making the turn when their weight was off their right front foot? Also if we are asking our horses to do a disengagement, side pass, leg yield or half pass, we want to ask our horses to use their inside hind leg more than the rest to get our horse's body in the right frame. (The inside hind leg would be the right if you are moving to the left.) So would it not make sense that we would put a little bit more leg on our horses when the inside hind leg was about to move under the horses body? If we put a little bit more leg on our horses at this time, then our horse will pick that foot up and put it farther under his rib cage giving him more reach and movement and a better body posture.

Have you ever seen a true Horseman get on a young horse that does not know very much, they can get that horse to do all kinds of things for them. That is because they know where the horse's feet are underneath them and know how to influence them to get the horse to do what they want. They can make it easy for the horse to move the way they are asking because they are asking in the right time with the horse's feet. This is what you can learn if you know how the horse moves and uses their bodies.

So I am going to start with the **Foot Falls of a walk**. (Now these are the gaits of non gaited horses). The Walk is a 4 beat gait. The horse has 4 legs, so that means that one foot moves at one time leaving the other 3 feet on the ground. We are going to start with the Right Hind (RH). When the RH moves forward the next foot to go is the Right Front (RF) then the Left Hind (LH) moves forward, then the Left Front (LF) moves forward, and then it starts all over again with the RH. So it goes like this: RH, RF, LH, LF. Think of it this way. The RH moves forward pushing the RF forward, the RF pulls the LH forward, the LH pushes the LF forward, the LF pulls the RH, the RH pushes the RF, the RF pulls the LH, the LH pushes the LF, the LF pulls the RH,.....etc. Now here is a fun thing you can do. Get two sticks 4' or so, and hold one in each hand like ski poles, hold them out in front of your feet. You are going to use them as your horse's front feet and then your feet are your horses hind feet. Get a friend to call out the foot falls as listed above and then you will move the correct foot and then the next one and so on. Get so that you can easily walk like this. That way it will really get the foot falls of your horse's gaits in your head and help to better understand how the horse moves. When riding your horse, look at his shoulders. When you see the RF shoulder bulge and move forward, you know that foot is moving forward. Get so that you can see when the front feet are moving forward. Then start to learn the feel of what it feels like under your seat. Once you get good at knowing when the front feet are moving, start on the hind. While sitting in the saddle, take your hand and put it on your horse's right hip bone. When you feel the hip drop down, you know that the foot is all the way back about to come forward. When the hip gets high up in your hand you know that it is all the way forward. Do this with both hips one at a time and get used to the feel in your seat. Test: Once you feel like you can feel the front feet without looking down, have a friend come and test you. Without looking down, say 'now' when you feel the RF landing on the ground, do it 10 times in a row in time with the RF, so say 'now, now, now'. Every time you say now the RF should be landing on the ground. If you did it correct, now do it with the LF when it lands on the ground. Then try the RF when it leaves the ground, then the LF when it leaves the ground. If you got all of those right, then try the hind feet. Do the RH when it lands on the ground. Then the LH when it lands on the ground. Then the RH when it leaves the ground. Then the LH when it leaves the ground. Keep playing with this until you can feel where your horse's feet are at any time underneath you. Check yourself by looking down at the shoulder for the front feet and feeling with your hand on the hips if you need to.

More articles on how to move your horse in the next few months. There are reasons to being able to do this to stay safe.

Riddle Ranch Ride And Election Meeting

San Joaquin Sierra Unit
Elections and General Meeting
October 18, 2014



Ride as you wish starting at 10:00AM

Lunch served starting at noon.

Meeting and Elections for the 2014 Officers and Board will start once everyone has received their lunch.

After the meeting you may enjoy another ride or visit with your friends.

Lunch will be prepared by the **Galloping Gourmets**
(Cathie Walker, Peggy Riddle, Cindy Mueller and the newest member
Jessica Pratt, 4 generations of cooks!)

Members are asked to bring “starters” A-K, side dishes L-R
and desserts S-Z.

If you have any questions on what to bring, call Cathie.

Water will be provided for you and your horses.

Please bring your bucket for you horse.

Please bring your own chairs, tables are optional.

The ride is located at 15056 Johnson Drive, Oroshi CA

Please RSVP by October 15, 2014

Cathie Walker (559) 283-1164

Cindy Mueller (559) 283-1174

(Cindy: e-mail chipzipnappy@aol.com)

Please call or email Cindy for directions.

WILDERNESS RIDERS SHARING BCHC, LEAVE NO TRACE INFORMATION AT CHUKCHANSI BALLPARK

By Randy Witt

On August 29 San Joaquin Sierra Wilderness Riders Randy Witt and Ted Fischer along with Sierra Free Packers Wilderness Riders Mary Odell and Denise Robinson manned a BCHC booth at Chukchansi Ballpark in downtown Fresno. The Fresno Grizzlies baseball team was sponsoring a family night camp out on their baseball field that night. As part of the National Forest Service contingency, Backcountry Horsemen had an opportunity to provide outdoor education to families attending the ball game. Groups who visited our booth had an opportunity to learn about BCHC and Leave No Trace camping. We had set up an iron horse and packsaddle to attract people to our booth. It was a great opportunity to present some camping facts and ethics to the general public.



SJS Unit Fund Raisers For Sale

"There's a Mule Under My Saddle Cookbook" by Jean Brown of Idaho \$10.00

Hats \$15.00

Khaki with a maroon or forest green bill are embroidered with one horse, two mules and says Backcountry Horsemen of California.

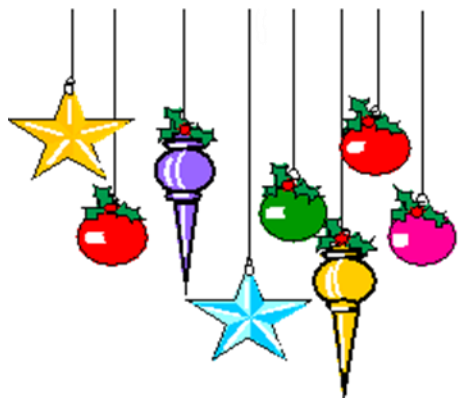
Scarf \$13.00

Scarves are a dark blue and are embroidered with one horse, two mules and says Backcountry Horsemen of California

Maroon Shirts \$35.00 (Extra Tall \$38.00). The shirts must be prepaid before the order. The logo on the left is BCHC with San Joaquin Sierra Unit under the BCHC. Names added for \$5.00 in a group.

Horse First Aid.....great, informative quick reference \$25.00

Contact: Pete Parkin 559-871-4500 ktzpaw@yahoo.com &/or look for items at our rides and meetings.



San Joaquin Sierra Unit
Backcountry Horseman
Christmas Bash
DECEMBER 13, 2014



Come One Come all, you don't need to be a member to attend!

Cost: \$25.00 per person (pay at the door or prepay)

Time: 5 P.M. Social Hour

Dinner: 7:00 PM



Location: Clovis Elks Lodge
535 Woodworth Avenue
Clovis

DJ and Dancing!!!! YeeHAW!
No Host Bar Silent Auction
And....Yummy Food
Tri Tip or Chicken



R.S.V.P By: December 5, 2014

**Cathie Walker 559-283-1164 or
walker1486@comcast.net**

PREPAY AND GET IT OUT OF THE WAY!

If you have AUCTION Donations please let Cathie know.

Tear off and mail BELOW! -----

Backcountry Horseman Christmas Party R.S.V.P.
By December 5, 2014

Name: _____ Numbers of Attendees: _____

Chicken Dinners # _____ Tri Tip Dinners # _____

Mail to: BCHC-San Joaquin-Sierra Unit
P.O. Box 25693
Fresno, CA 93729-5693

Paid amount: _____
Check #: _____

☐ **NEW MEMBERSHIP APPLICATION**

Backcountry Horsemen of California

☐ **RENEWAL APPLICATION**



☐ **CHANGE - () PARENT UNIT () ADDRESS/PHONE/EMAIL () MEMBERSHIP TYPE**

DCTR (YOUR MEMBERSHIP NUMBER) _____

****NEW MEMBERS WILL BE ASSIGNED NUMBER BY MEMBERSHIP COORDINATOR**

PARENT Unit Affiliation: (Select and **CIRCLE ONE** Unit as your Primary Unit Affiliation)

Antelope Valley
Eastern Sierra
High Country
High Sierra
Kern River Valley
Kern Sierra
Lake-Mendo
Los Padres

Mid Valley
Mother Lode
North Bay
Oklone Riders
Redhawk Riders
Redwood
San Diego
San Geronimo Pass

San Joaquin Sierra
Santa Ana River
Sequoia
Shasta Trinity
Sierra Freepackers
Sutter Buttes
Top of the State

MAIL TO:
BACKCOUNTRY HORSEMEN
OF CALIFORNIA
1280 State Rte 208
Yerington NV 89447
<http://www.bchcalifornia.org>

Donate to BCHC
Education Fund?
Tax Deductible

Packer \$10.00
Mule Skinner \$25.00
Other (Write in) \$_____

MEMBER'S NAME -No Business Names; Please Print Clearly

SPOUSE/MEMBER'S NAME -MUST SHARE SAME ADDRESS

ADDRESS

CITY

STATE

ZIP

PHONE

EMAIL ADDRESS

Make Checks Payable to: BCHC

CHECK # _____

DATE SUBMITTED: _____

TOTAL ENCLOSED: \$ _____

BUSINESS NAME - DONATIONS ONLY:

PARENT UNIT MEMBERSHIP TYPES: (CIRCLE ONE)

Individual \$50.00* Family \$60.00* Benefactor \$100.00 Patron \$250.00 Mt Whitney \$500.00

**=BCHC shares portion of dues with Backcountry Horsemen of America*

ASSOCIATE MEMBERSHIPS: AN ADDITIONAL \$15.00 PER UNIT IS ADDED TO YOUR PARENT UNIT DUES.

ASSOCIATE MEMBERSHIP UNIT AFFILIATIONS MAY NOT BE FOR THE SAME UNIT AS YOUR PARENT UNIT.

Associate Membership for: _____ \$15.00/unit (Unit Name (from above list))

Associate Membership for: _____ \$15.00/unit (Unit Name (from above list))

Please write additional choices on back

Please clip form along dashed line - **KEEP BELOW INFORMATION FOR YOUR RECORDS**

PARENT BCHC MEMBERSHIP TYPES

Individual, Family (Shared*), Benefactor, Patron, and Mt Whitney. A Parent Membership is affiliated with a single Local Unit. BCHC members may NOT hold more than one active Parent Membership.

A SHARED Membership is for two adults with differing last names, each sharing a common address.

ASSOCIATE MEMBERSHIPS

These special Memberships are only available to persons already holding Parent BCHC Membership. No one may sign up for an Associate Membership without 1) having registered one of the Parent Membership types, and 2) having selected Parent Unit affiliation.

- You may sign-up for as many Associate Memberships as you like.
- Associate Memberships may also be initiated at any time during the term of your Parent Membership.
- Associate Memberships must expire concurrently with the Parent Membership, and are renewable only at the time of renewal of the Parent Membership.

Complete information regarding BCHC Membership is available on the **MEMBERSHIP** page at: <http://www.bchcalifornia.org>

KEEP FOR YOUR RECORDS

I SUBMITTED AN Application Form for:

☐ Individual Membership \$ 50.00
☐ Family (Shared) Membership \$ 60.00
☐ Benefactor Membership \$100.00
☐ Patron Membership \$250.00
☐ Mt Whitney Membership \$500.00
☐ Donation - Packer \$10.00
☐ Mule Skinner \$25.00
☐ Other (Write in) \$ _____
☐ Associate Membership \$ _____
Total Remittance \$ _____
Check Number _____
Date Mailed _____

Questions: Contact membership@bchcalifornia.org



San Joaquin Sierra Unit

P.O. Box 25693

Fresno, CA 93729-5693



Objectives & Purpose of the Backcountry Horseman of California

From the BCHC Bylaws

- To improve and promote the use, care and development of California backcountry trails, campsites, streams and meadows; to advocate good trail manners.
- To promote the conservation and utilization of our backcountry resources in concert with livestock transportation.
- To keep the backcountry trails and forage areas open to horseman on all public lands.
- To keep current information before the Corporation membership and its local Units regarding new legislation or management plans related to government regulations of the backcountry.
- To support or oppose new proposals, plans and restrictions as related to the interest of horsemen and those persons interested in recreational stock use and enjoying the backcountry.
- To promote the interest of people who, due to health or physical factors, need transportation other than by foot on backcountry trails.
- To promote public awareness and interest in the historical aspect of horsemen and stock in the backcountry and to help educate backcountry users on the ways to use the trail and foraged in a manner that conserves the backcountry resources.
- To assist in keeping the public informed of the vital need for a clean backcountry.
- To promote a working relationship with and keep the work and interests of the Corporation before our local, state and federal officials.
- To assist in the formation and continuation of local Units to carry out these purposes.