

SAN JOAQUIN SIERRA

Hoof Prints



November 2024

Issue 76

San Joaquin Sierra Unit, BCHC
PO Box 25693
Fresno, CA 93729-5693

Email: membership@bchcalifornia.org (membership email only)
On the WEB: www.bchcsjsu.org (SJS Unit) or
www.bchcalifornia.org (State)

Max & Irene Cochran
Newsletter
Award Winner

3rd - 2022

BACKCOUNTRY HORSEMEN



Concerned Men and Women Dedicated to Gentle Use of California Trails and Backcountry

Presidents Message



Just around the corner we have our Holiday dinner and Unit Awards November 9th (Flyer inside). Please RSVP to Debbie Dixon ASAP so we can prepare El Pueblito's on the number coming. If you have not bought tickets for the Rifle Raffle (Henry 22) You can call

me or we will have tickets at the dinner for sale. The winner will be selected at the dinner. Please come out and cheer on our Top Hand recipient for 2024 while enjoying a meal and fellowship and don't forget to bring your favorite dessert for the dessert auciton.

We just had our Election/General meeting up at Loni Langdon's place and we have again filled all the board seats. See article inside on the results' and a big thanks to Loni for the use of their place and her World Champion Pack Team members from Reedley College, Harley McCorkle, and Ethan Greeves for

helping with the packing demonstration and thanks again Loni for the Dutch Baby with all the fixings (Recipe inside). Don't forget, if you would like to sponsor or have an idea for a new place for a ride, we would be glad to have your input.

Thanks to all who continue to participate and those of you who continue to be part of our unit. Hope to see you soon on the trail in the middle of the saddle on top.

Your President, Jim Laber

In This Issue

| | |
|---------|---|
| Pg. 2 | 2024 Calendar |
| Pg. 3 | Recipe of the Month |
| Pg. 4 | September Minutes |
| Pg. 5 | Holiday Dinner Flyer |
| Pg. 6-7 | Shaver Return, and Beyond |
| Pg. 8 | Election/General Meeting |
| Pg. 9 | Call to Serve |
| Pg. 11 | 2024 Officers & Directors |
| Pg. 12 | Caruthers District Fair Parade |
| Pg. 14 | Montana De Oro, Costal Mounted Assistance |
| Pg. 15 | Mountain Lion Essentials |
| Pg. 16 | Peggy Riddle Memorial |
| Pg. 17 | Kids Corner |
| Pg. 18 | Membership Application |
| Pg. 19 | Big Meadows Horse Camp Sponsors |

2024 Calendar

Board Meetings are now on the 3rd. Tuesday of the month. All members are welcome to attend. Board meetings start at 6:30 pm and for now we are meeting at the American Legion Hall, 508 4th Street, Clovis, CA 93612.

Calendar & Ride schedule is on-going, and new events and rides will be published when confirmed.

Note: Dates and events are subject to change or cancellation; calling the contact person is recommended or checking www.bchcsjsu.org

2024

| | |
|---------|------------------------------------|
| Nov 9 | Holiday Dinner/Awards |
| Nov 19 | Board of Directors |
| Nov. 23 | San Joaquin River Gorge Work Party |
| Dec 17 | Board of Directors |

2025

| | |
|----------|---|
| Jan 4 | San Joaquin River Gorge Ride (New Years Ride) TBD |
| Jan 21 | Board of Directors |
| Feb 18 | Board of Directors |
| March 18 | Board of Directors |
| April 12 | Desensitizing Clinic, Luck of the Irish Ranch |
| April 15 | Board of Directors |
| April 26 | Clovis Parade |

Is there any activity that you would like to sponsor? We are always looking to improve the club and making it fun for all members. Please submit your ideas, jim@visaliaidea.com. You may call 559.250.7906 and I will get back to you.

Jim Laber
President

Remember to check for any Unit updates at our Web Site:

www.bchcsjsu.org for the San Joaquin/Sierra Unit,

www.bchcalifornia.org for the State Web Site

The purpose of this publication is to keep its members in- formed on important issues that affect all horsemen and to inform the membership on up-coming events within the unit. The views and opinions expressed in this newsletter are those of the editor & authors and not necessarily shared by BCHC.

Dutch Baby Dutch Oven Style - YUMMY & BEAUTIFUL!

Prepared October 19, 2024 by Loni Langdon for BCHC SJSU

AKA: eggy pancake, Bismark, German pancake, Dutch Puff, Hooligan, Hootenanny, Yorkshire pudding

This recipe cooks fast - about 15 minutes & makes a beautiful, fluffy presentation when you first open the oven. If you get it right, the cake may even raise the top of the oven lid! It quickly falls as it cools & that adds to the lovely, dense richness of the flavor. Serve warm or cold. Top with maple syrup, ice cream, whipped cream or all of the above. Recipe is measured for a 14" round Dutch oven

Keys to recipe success:

Hot Dutch oven & lots of Butter - goal: 425 degrees - butter melted HOT!

Temp check: Oven is about 425 degrees when you cannot keep your hand 2" above it.

Parchment paper - for quick clean up

Quality coals - I use standard Kingsford

Heat coals: Glowing hot coals are key. I use a coal stack to manage coals.

Prep oven: Line oven with parchment & add butter. Grease the interior of the lid. Cover base of oven with lid, tucking the paper inside.

Prep Batter:

Mix together:

- 8 eggs
- 2 cups flour
- 2 cups milk - whole

- 1 T Vanilla

- 2 T Sugar

Set aside:

- 1/4 Cup Butter (one stick)
- 2 cups blueberries - frozen or fresh

In a fire pan: Create a checkerboard bed of coals nearly touching one another the size of the oven bottom. Place oven on coals to pre-heat.

When butter melts & oven is HOT add mixed batter ingredients, then the berries.

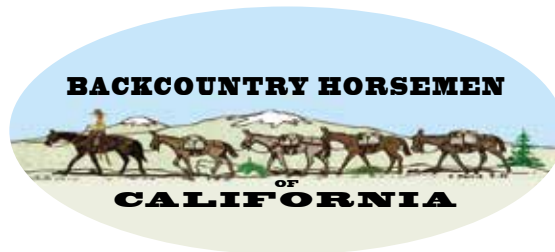
Cover with lid. Add coals to the top of the oven - similar to the bottom.

Bake 10-15 minutes.

Pro Tip: Do not open the oven until you get a whiff of the yummy goodness inside.

ENJOY!





San Joaquin Sierra Unit

Board Meeting Sept 20, 2024

Call to order: 6:30

Flag salute

Roll Taken: : President: Jim Laber, Vice President: Ruth Cramer, Treasurer: Gary Van Sickle

Directors: Doug Laber, Karen Daughtrity, Sue Van Sickle, Loni Langdon, Steve Naylor • Absent: Carol Kaminski

Minutes review and approved: 1st Doug, 2nd Sue, passed unanimously

Correspondence: The treasurer noted a donation was received from Jan and John Mikkelsen for Big Meadows.

Committee reports:

Education: Highlining article will be in the next newsletter. Still need a person for this committee

Membership: At the Memorial ride picked up a few new members from the Tehachapi group. Also, several associate members.

Newsletter: Articles due September 20. Would like to get some ride articles from the members.

Sunshine: Card sent to the family of Bobby Tanner who passed away in Bishop.

Public lands: Last work party at Badger Flats. Might consider Sample Meadows next year. Will work with the Forest Service on this. Discussion on saw training. First Aid class on Oct 5.

Shaver Lake: Camp to remain open until Oct. 1. Will need some volunteers to help on trail maintenance in the Camp area next year. Ruth will follow up with Jim Dixon on this.

Big Meadows: Camp will close at the end of Sept. Jim will arrange for closing camp.

Jim noted the possibility of getting water from one of the fire units at Hume. The Forest Service doesn't want horses drinking from the creek. Jim suggested moving the water to the host camp site next year. Will reinforce the need for campers to bring water for their stock. Concern was also expressed for nearby restrooms being locked and the additional use of the camp's restroom. Consensus for Jim to follow up with the Forest Service about this.

OLD BUSINESS. Events for 2024: Jim reported the Memorial ride was very good – good attendance. Regarding the Gorge, he reported another 3 miles needs to be maintained. Will set Oct. 26 for a work party. No meals will be served by the Unit.

Regarding the Holiday Party – This will be held on Saturday Nov 9 at El Pueblito Mexican Restaurant in Clovis. There will be 3 menu selections. After dinner will be a dessert auction. Doors will open at 5 pm, with dinner at 6 pm. A flyer has been sent out to the members.

Regarding the CMA-MDO Event: The Unit has committed to help with the dinner. Jim will coordinate the meat – tri tip and chicken.

NEW BUSINESS: Election Meeting: Will be held at Loni Langton's on Saturday October 19 at 2 pm. Located at 33390 Antelope Lane, Yokuts Valley (Squaw Valley). Bring your own chair. Dutch oven cobbler and ice cream will be provided. Election of officers for 2025 will be held. If you know of someone who would be interested in being an officer or director, please notify Jim.

2025 Events: Ruth reported a possible obstacle ride near Prather for spring – Rusty Spur. She will check on this.

Jim discussed the desert ride and some of the activities available during the ride.

Next meeting: November 19, 2024

Adjourn: 7:25 pm. 1st Ruth, 2nd Doug.

BACKCOUNTRY HORSEMEN



San Joaquin Sierra Unit

Holiday Dinner

NOVEMBER 9TH

Save the Date!

Contact Debby Dixon to reserve your spot by Nov. 1st

559-906-9334 (call or text)

Cost: \$30 per person

OPEN TO THE PUBLIC!

Unit Awards • Rifle Raffle

50/50 Raffle • Dessert Auction

(Bring a dessert for Auction)

El Pueblito Mexican Restaurant

1437 Tollhouse Rd., Clovis, CA 93611

No host bar • Dinner at 6:00pm

Please make checks payable to: BCHCSJSU

SHAVER RETURN, AND BEYOND

By Jennifer Best/BCHC-SJ/S member

What a spectacular summer for Sierra trail time! After the 2023 mosquitogeddon season, this one was an extra special joy, particularly joined by friends who spotted my photos of the late July/early August Shaver Lake horse camp trip. We packed up again and headed to the BCHC camp for a few days before I continued on to my scheduled pack. I think the miles of trail we rode at the lake really helped the animals (and me) acclimate before making the climb into the backcountry.

New SJ/S associate members Karen and Mike Larson, Cory Pereira and I hauled four horses a mule and three rigs up to camp in the meadow between the shaded picnic tables and the pens. The Larsons opted to run their own electric pens rather than leave their horses out of sight and away from their trail buddy (Cory's horse) in the third pen back. I ran electric inside the first pen because my little mule thinks these twisted wire fences are for limbo, one of his favorite games no matter how much food I put in with him and the mare that shares his space.

Once settled into our camp after the drive from the coast, we walked the half mile down to the lake for a dip in Dorabelle Cove where the water must've been in the high 70s: perfect for swimming. Then we mounted up for a short loop along the Lily Trail. It's a nice little 2-mile loop stretch down to the lake, along the shore, around the "Vista Loop" then back up to camp. While the temperature at the bottom of the four lane at 10 a.m. was closing in on 90, it peaked at 78 up here and settled into to an overnight cool in the mid-40s - just what we were looking for in our escape from summer heat at home!

Since three out of four of us had never been here, and I'd only done some limited riding directly from camp earlier in the month, we opted to ride east out of camp and explore the trail network along shore. Four horsemen plus one mule in tow. We avoided Burr Meadow where Ruth Cramer had informed us bees (yellowjackets) were active on the trail, but we found our own bee burrow 3 miles into our ride on the rise just before the drop into Stevenson Creek. A call from the back of the line, "Bees!" got the folks in the lead kicking their mounts into high gear to get out of the way for the folks in the back who got the worst of it. The mule (equine #3) got a pick on the pastern, and one of the horses in the back got a bite in the butt, but we were otherwise unscathed.

We found our way to a fantastic swimming hole in Stevenson Cove where we tied, dipped, and enjoyed picnic lunch before doubling back, taking the road/trail toward Fishing Club which we learned was gated off. So we doubled back and took another trail uphill and back to camp for a solid 10-mile day.

The following day, we headed over to Clyde Pack Station where we met up with Kathy Rohde for a visit. I'd met her a few years ago when she worked up at High Sierra Ranger Station (Kaiser Pass), and have stopped by to visit her whenever I can. Kathy was raised right there back when her Grandpa Anderson owned the pack station and the grill at Dinkey Creek. Her dad worked at the lumber mill just up the hill when she was a little girl, so she spent her childhood in one of the family houses there and ranged the territory with a pack of little kids. She mounted up on her sexy mule and joined us for a day ride, meandering trails, and telling us area history and family history and trail lore for nearly 5 miles of adventuring before we settled in at the station for a late picnic lunch, more story swapping.

From Shaver Camp, there are other trail options within a short drive. My favorites so far are Kaiser Wilderness (Potter Pass) and the California Hiking and Packing Trail out of Badger Flat. Our unit's volunteer trail crew cleared out the trail from Badger Flat past Weldon's Camp in August, so it'll be a good ride for the rest of the season, I reckon. Head up there if you have time before the snow flies.

On their last day up at the lake, our camping group opted to adventure west of camp on horseback. We rode back down Lilly Trail to the lake, then hooked a left and followed the shoreline, followed the signs to Museum of the Sierra (no hitching post), through some really nice meadows and back up to Shaver town for refreshment. While looking for somewhere to hitch, a resident offered her yard, so the horses enjoyed the shade while we enjoyed lunch at the Shorthorn. We took another dip at Dorabelle Cove and noted the water had dropped significantly since our swim 48 hours earlier.

Friday was pack-up-and-head-out day for most of our crew, but my wilderness permit wasn't open until Monday. I initially thought I'd just head out to a meadow somewhere in the forest and hang, but then that summer cold snap forecast came in (24 overnight low in the meadow I was headed for... no thank you). So, I got to thinkin': why not just stay here at this perfectly good camp? I contacted Ruth Cramer, the camp host, and confirmed no one else had reserved it. Sent her the payment (only \$10/night per club member!) and settled in for a rest, reading, nap, map reading, another swim at the cove, and some overdue trailer organizing and animal grooming.

Saturday the temps dropped significantly, never breaking out of the 50s. It was too cold to sit in camp, plus I was itchin' for another ride. I headed back down the eastbound trails, past Stevenson Cove to an old Boy Scout outpost camp from Camp Chawanakee. It was once a cattle outpost and is marked on old USGS maps with just "corral." The buildings are long gone, and the only sign of the corral is the flat spot in a sea of uneven ground. A lone ancient cedar stands sentinel over the peaceful spot. At 9.7 miles, it was a nice quiet ride out and back.

Sunday it was pack up and cleanup, prep for a different kind of camping, load up as much as I could in the panniers, then a ride into town for dinner and to pick up some last minute supplies.

Monday, I rose early, packed up my gear - half to stay in the rig, half to go in the panniers for further adventure, cleaned up the pens and campground and headed out for Courtright Reservoir. The Maxsom Dome Trailhead parking lot is on the other side of the dam, and I made it in (and out) before the dam road was closed for hydro facility repairs for what's likely the rest of the season.

One mule, one horse, one dog, one woman - up the trail into Red Mountain Basin for the week. It's a beautiful, ride, pretty technical at points, with lots of granite and, this year, not much water where crossings have been flowing well the past three years (especially last year). Lots of lakes to explore from a base camp, or pull stakes and make new homes as you like. The swims at Fleming Lake, Rae Lake, Lower and Upper Indian Lake are wonderful. The view from Mosquito Pass is worth the hike. (Not recommended for stock past Lower Indian Lake.) But there are lakes I still haven't seen, so I'm already making plans for next year. Anyone want to pack in?

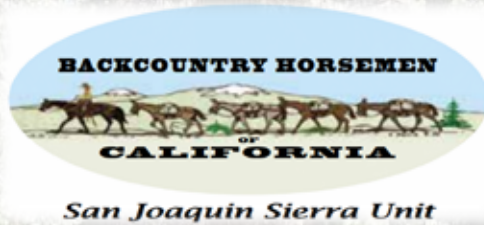


ELECTION/GENERAL MEETING

By Jim Laber

On October 19th we had our election meeting out at Loni Langdon's Place in Yokuts Valley formerly Squaw Valley. Loni and two current students from Reedley College, put on a packing clinic and we got to watch a pack put on one of Loni's mules by two Mule days World Champions Harley McCorkle and Ethen Greeves, from pad to box hitch tie off. Loni went over a lot of safety and reasons for following set procedures on packing and the importance of a balanced load that is the right weight for the stock and put together with the stocks comfort with the way the load rides. After the presentation we held our election with the following results. Returning Ruth Cramer to VP, Linda Fitzgerald to Treasurer, Marcee Hansen Director, Jan Mikkelsen Director, Lois Patten to Director and new to the board Jeannine Jones director. After the election Loni cooked up a Dutch Baby in her Dutch ovens, and we had whip cream and ice cream to top it off. Thanks to all who attended and for supporting your board by putting your name up for service to your unit.





ATTENTION MEMBERS

We greatly appreciate your membership regardless of involvement. Although if willing, we would love to help you get more involved. Our unit needs more members to participate in our events, sponsorships, and work parties for us to continue to take on projects as we have in the past. Our group, like many other groups, has been ageing out in the last few years and some are passing the torch to the next generation.

We are a volunteer group that gives when we can, and no one is expected to do anything they can't, or have no desire to. Maybe now is your time to get a little more involved. We would love to hear from you if you do.

- Event Organizer
- Writer
- Equipment Manager
- Trail Recon
- Public Lands Liaison
- Education
- Newsletter
- Sign Up Tables
- Directors
- Officers
- Trail Work
- Ticket Sales
- Food Prep & Service
- Committees
- Shaver Camp Host
- Membership
- Base Camp Radio Monitor
- Ride Coordinator
- Grant Proposals
- Decorator
- Sun Shine
- Web Wrangler
- Much Much More

If you might be interested, feel free to ask any of us. Jim Laber 559-250-7906

Ruth Cramer 559-417-3878 Steve Naylon 559-284-7478 Doug Laber 559-786-6634

Marcee Hansen 559.977.9472 Karen Daughrity 559-903-5552

Lois Patten 559-970-2548 Loni Langdon 760-920-5159

www.bchcsjsu.org

Make sure you check out our website for updates on the Home page, Calendar page, and Newsletters. We also have a Photos page of our latest activities.

If you have any photos send them to Jim at jim@visaliaidea.com or upload them through the website: www.visaliaidea.com

Advertising Rates

Classified Ads

\$.10/word with a 20 word minimum (\$2.00),
\$.50 a line after that.

Display Ad Rate per issue

| | |
|-----------------------------|--------------------|
| Business Card Size, \$8.00, | 1/2 page, \$35.00, |
| 1/4 page, \$20.00, | Full Page, \$50.00 |

Prices are subject to change without notice. All prices are for one month, due the 10th of the month. Editor reserves the right to refuse inappropriate ads.

All paid Ads include an E-mail Blast to all members with current emails

Attention

Your SJS Unit Board of Directors would like to invite any of our members to attend the monthly Board meetings or General meetings. It is important all directors have the same opportunity to hear the information, concerns or suggestions you wish to share. We are volunteers doing our best to keep our Unit informed and working smoothly. Refer to the newsletter, or website (bchcsjsu.org) for the information regarding times and location of upcoming meetings.

Respectfully,
Jim Laber

CONTEST TIME

Find the Hidden Hoof Print! 

First person to find the hidden hoof print in this newsletter and email Jim Laber @ jim@visaliaidea.com

Will Get A Free

BCHCSJSU Long Sleeve Color T-Shirt

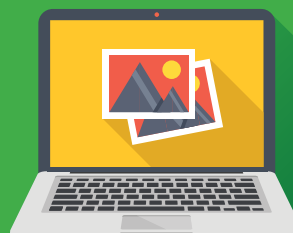
GOOD LUCK!

***Congratulations to
Renée Badertscher
for being the first one to find the
hoof print last issue!***

HOWDY

If you have attended any BCHC San Joaquine Sierra Unit events and have pictures, it would be deeply appreciated if you would send them to wpeverill@sebastiancorp.net. As the webmaster, I like to keep the webpage up to date with photos of our events. Since I am not at the event, this is the only way to keep page current. You may also text via my phone number located on the webpage under webwrangler. Thanks in advance. Visit the webpage at bchcsjsu.org Happy Trails.

William Duane Peverill
Web Wrangler and Past President



2024 OFFICERS/DIRECTORS

President

Jim Laber, 559-250-7906
jim@visaliaidea.com

Vice President

Ruth Cramer, 559 417 3878
racramer@outlook.com

Secretary

Carol Kaminski, 559-733-9170
kaminskiclan@gmail.com

Treasurer

Gary Van Sickle, 559-288-0301
gwvansickle@outlook.com

DIRECTORS

Term Expires at end of year:

Steve Naylor, 559-284-7478
scnaylor@hotmail.com
2025

Loni Langdon, 760-920-5159
lclangdon@gmail.com
2025

Karen Daugherty, 559-903-5552
k_daugherty@yahoo.com
2025

Doug Laber, 559-786-6634
doughlaber@gmail.com
2025

Marcee Hansen, 559-977-9472
jamn4jabez@yahoo.com
2024

Jan Mikkelsen,
jessecowboy@comcast.net
2024

Susan Van Sickle 559-779-4105
gwvansickle@gmail.com
2024

Lois Patten 559-970-2548
pattenkennel@gmail.com
2024

COORDINATORS

Membership/Mailing Coordinator

Jan Mikkelsen,
jessecowboy@comcast.net

Public Lands Liaison

Joe Kaminski, 559-733-9170
kaminskiclan@gmail.com

Newsletter Editor

Jim Laber, 559-250-7906
jim@visaliaidea.com

Education Coordinator

Jim Laber, 559-250-7906
jim@visaliaidea.com

Sunshine

Susan Van Sickle 559-779-4105
gwvansickle@gmail.com

Shaver Lake Camp Host

Ruth Cramer, 559-417-3878
racramer@outlook.com

Web Wrangler

Duane Peverill, 559-908-3138
wpeverill@sebastiancorp.net

Facebook

Marcee Hansen, 559-977-9472
jamn4jabez@yahoo.com

Big Meadows Horse Camp

Jim Knabke, 559-299-3254
jjknabke@comcast.net

ADVISORS

Past President

Joe Kaminski, 559.909 0505
kaminskiclan@gmail.com

CARUTHERS DISTRICT FAIR PARADE

By Renée Badertscher

In recent years past, Patty and Rick Pereen have shared their experiences, knowledge of horsemanship and their “family” of horses with myself!!! I have been honored and proud to experience my love for riding with both of them!! Therefore, allowing my continued participation in parades, especially in my family hometown community of Caruthers. Many families have less to give, but those “precious little smiles” from all the children admiring us and our beautiful horses (like 32 year old Rebel) are the greatest treasures !!!

Patty rode Star a beautiful Palomino, and we proudly carried the American and BCHC flags with honor!! I just heard today that Patty Pereen and myself received a 2nd place trophy in the “Lady rider” category in the Caruthers District Fair parade representing the BCHC!!!!

Thank you again for this honor and thank you dear VP Ruth for meeting us before the event!!



SUNSHINE CORNER

Stay Safe Everyone
and Happy Trails



The Lighter Side



"I ain't tryin to ride him....I'm lookin' fer a clear spot
to land!"

WELCOME TO OUR NEW MEMBERS!

Patricia Achilly, Downey

Sheila Emery, Tehachapi

Pat Plume, Sanger

Kaitlen Betchel, Lemoore

Jason & Anne Nikolakakis, Templeton

Morgan Wukodinsvich, Kingburg

We Love To Make You Look Good!

IDEA!

PRINTING & GRAPHICS INC.

(559) 733-4149

Fax: (559) 636-3690

orders@visaliaidea.com • www.visaliaidea.com

1921 E. Main Street • Visalia, CA 93292

Mon.-Fri. 9am-5pm

*Contributing to your success,
one impression at a time!*



MONTANA DE ORO, COSTAL MOUNTED ASSISTANCE

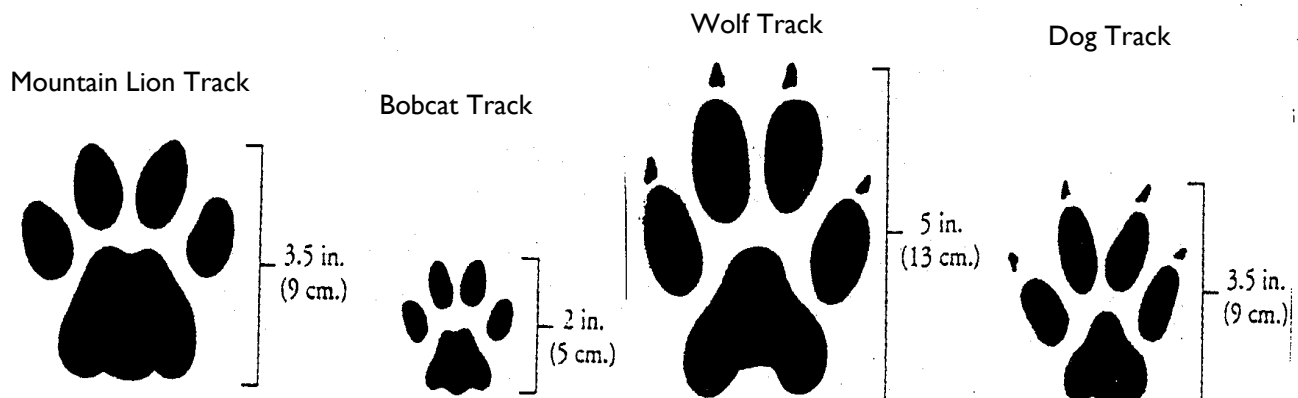
October 10th – 14th

By Doug Laber

This year's annual fund raiser for the Costal Mounted Assistance was a big hit, even though the turnout this years was lighter than expected. We all got to enjoy familiar faces that you haven't seen since last year and missing those that were not able to make the trip.

Our road trip over became a little exciting when we got a call from Brian and found out that his horse trailer had lost a wheel. Brian was just outside Paso Robles when he lost his wheel. The road he turned onto, to get out of the traffic, turned out there was a trailer repair business there. Having bad luck and good luck in one day is pretty good. When Jim and I got to Brian he had already had the parts to put the trailer back together and he asked us to take one of his horses in our trailer. Jim and I headed over to Montana de Oro to get set up. We got our stock put up in the corrals and watered. Set up camp and then waited for Brian to show up. We spent Friday and Saturday riding the beech trails and finding ones we hadn't ridden before. Sunday was the big event day for Steve Naylor, Brian and Kimberly Jones, Jim and I as we were the ones in charge of feeding all the guest. We were tasked with cooking all the meat for the Luncheon. We had 40 lbs. of Tri Tip and 30 lbs. of chicken legs and thighs. Turns out we ended up doing a real good job, and received a lot of complements. Jim and I want to thank Steve, Brian , and Kim for all of their help in getting this done.





Mountain Lion Essentials To Remember

The following are some helpful hints to remember while visiting the forests and parks or maybe your own backyard.

You Must Be Alert

Remember Wild Animals Can Be Dangerous

Each Situation is Different

Hiking Alone Can Be Dangerous. Statistics show that nearly all recorded attacks in California involved lone trail runners and children.

Keep Children Close To You. Mountain lions seem especially drawn to children. Keep children within your sight at all times.

Avoid Confrontations. Most lions will try to avoid you approaching them. Give them a way to escape. Never corner a wild animal.

If You Smell A Dead Carcass, be extremely alert and get out of the area. Animals will protect their food supply.

Please Do Not Crouch or Bend Over. A person squatting or bending over looks a lot like a four-legged prey animal. If you must bend over, get quickly back to an up-right position.

Please Do Not Run. Running stimulates the lion's instinct to chase. Stand still and face the animal. Maintain constant eye contact. If you have children with you, pick them up if possible so they do not panic and run.

Try To Look Big. Raise your arms and speak firmly in a loud voice. Throw rocks or branches without crouching or turning your back.

Fight Back If Attacked. Protect your head and neck area. Remain standing and face the animal.

We hope this information gives you a better understanding of how the California Mountain Lion thinks and appreciate the animal's abilities.



The content of this written material has been officially approved for distribution by
Backcountry Horsemen of California P.O. Box 40007 Bakersfield, CA 93384-0007
www.bchcalifornia.org 12/08

OUR DEAR BCHC-SJSU VALUED AND LOVED MEMBER

Margaret Lynn "Peggy" Riddle

1956 ~ 2024

FUNERAL HOME: Dopkins Dinuba Funeral Chapel
189 South J Street, Dinuba, California

UPCOMING SERVICE: Graveside Service
Nov. 4, 2024 • 10:00 a.m.
Smith Mountain Cemetery

November 17, 1956 - October 10, 2024



Clovis, California - Peggy Riddle passed away peacefully on Thursday, October 11, 2024. Peggy was born on November 17, 1956 to Don and Hazel Riddle in Corcoran, California. Peggy was the third child of Don and Hazel's four children, Cathie Riddle Walker, Gary Riddle, and her twin brother Kevin Riddle. She is preceded in death by her parents, Don and Hazel and grandparents, Ralph and Margaret Gilkey and Charles and Laura Riddle.

Peggy grew up on the family ranch outside of Orosi, California. She attended the local public schools, graduating from Orosi High School, with honors, in 1974. Peggy attended College of the Sequoias in Visalia, transferring to University of CA, Davis. Her intended path was to enter Veterinarian Medicine. After one year at UC Davis she transferred to Fresno State to pursue a career in nursing, earning her Bachelor's Degree in '79 and then her RN (Registered Nurse) degree in '83. Peggy then continued on to earn her CCRN (Critical Care Registered Nurse) as well.

Her entire professional career was spent working at Fresno Community Hospital, now known as Community Regional Medical Center. 39 years in the Critical Care Unit of CRMC where she was earned the admiration and respect from everyone she came in contact with. Peggy had a positive impact on so many. Patients and their families experienced her expert care, knowledge, and kindness. Many young people considering a nursing career often consulted with Peggy and ended up choosing so because of Peggy's mentoring. She leaves a great legacy from her professional career.

Peggy will always be remembered by her family because family is who she was, all about relationships. Whether traveling the world with family or supporting her many nieces and nephews at various sporting, theater, and academic events, Peggy absolutely loved her family. Peggy is survived by the family she held so dear. Her siblings, Cathie Walker, Gary Riddle, and Kevin Riddle and his wife Ann. Also survived by 7 nieces and nephews, 25 great nieces and nephews, and, at last count, 7 great great nieces and nephews.

A graveside service will be held in her memory at 10:00 am on Monday, November 4th at Smith Mountain Cemetery, Dinuba, CA.

Please go to the following link to read more about Peggy. <https://www.dignitymemorial.com/obituaries/dinuba-ca/peggy-margaret-riddle-12027021>

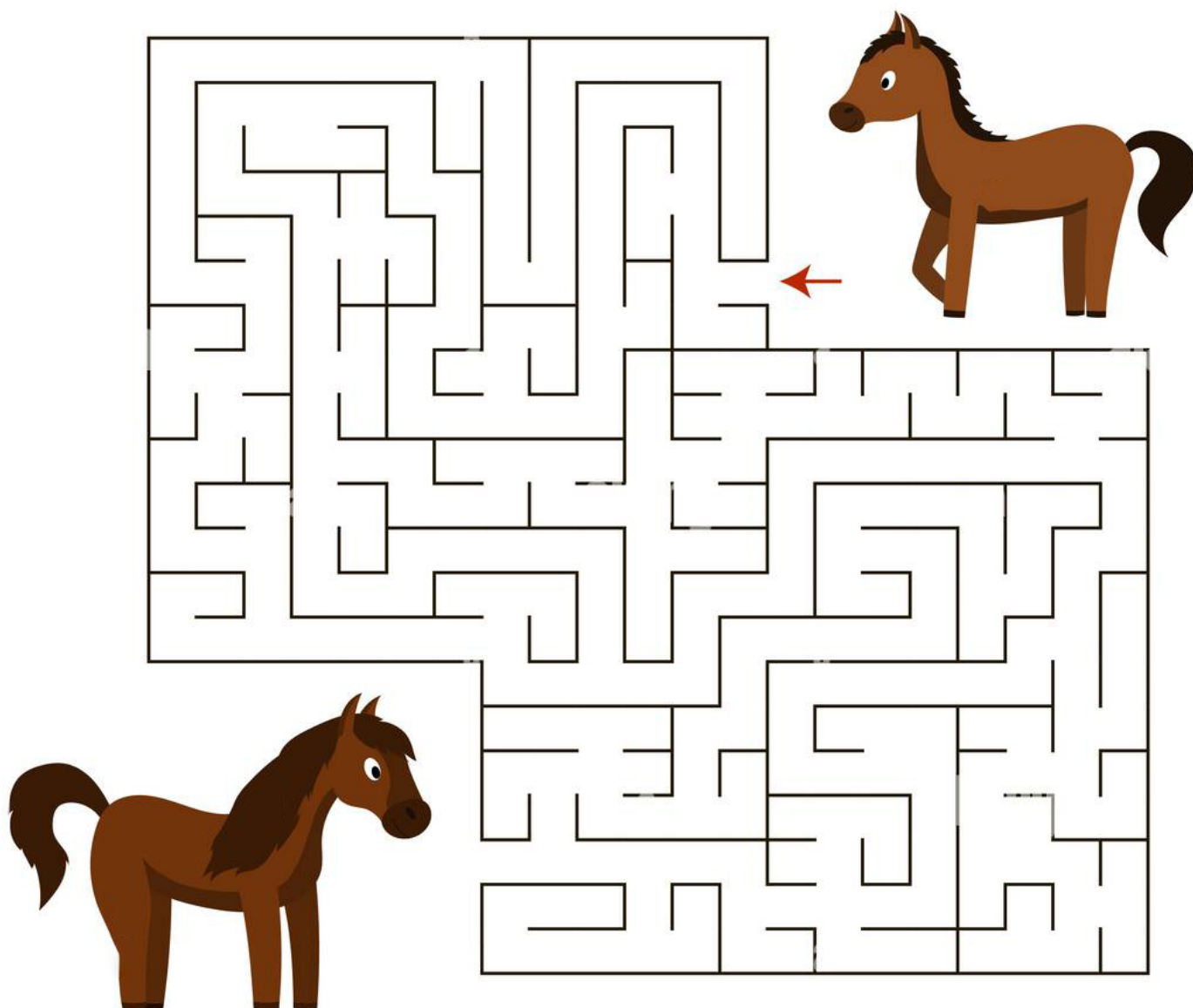
In lieu of flowers please consider donating, in Peggy's memory, to the following organizations that Peggy cared so much about.

Happy Trails Riding Academy: happytrailsridingacademy.org

BCHC: Back Country Horseman of California bchcalifornia.org

Immanuel Schools: immanuelschools.com

KIDS CORNER



Backcountry Horsemen of California



MAIL TO: BCHC
MEMBERSHIP
1280 State Rt. 208
Yerington, NV 89447

MEMBERSHIP APPLICATION

A Family & Youth
Oriented organization

☐ New ☐ Renewal
☐ Change

PARENT UNIT AFFILIATION: (Select and CHECK a Unit as your Affiliation)

| | | | |
|--|---|--|---|
| <input type="checkbox"/> Antelope Valley | <input type="checkbox"/> Lake-Mendo | <input type="checkbox"/> Pacific Crest | <input type="checkbox"/> Shasta Trinity |
| <input type="checkbox"/> Eastern Sierra | <input type="checkbox"/> Los Padres | <input type="checkbox"/> Redshank Riders | <input type="checkbox"/> Sierra Freepackers |
| <input type="checkbox"/> High Country | <input type="checkbox"/> Manzanita Riders | <input type="checkbox"/> Redwood | <input type="checkbox"/> Sutter Buttes |
| <input type="checkbox"/> High Sierra | <input type="checkbox"/> Mid Valley | <input checked="" type="checkbox"/> San Joaquin Sierra | <input type="checkbox"/> Top of the State |
| <input type="checkbox"/> Kern River Valley | <input type="checkbox"/> Motherlode | <input type="checkbox"/> Santa Ana River | |
| <input type="checkbox"/> Kern Sierra | <input type="checkbox"/> North Bay | <input type="checkbox"/> Sequoia | |

DCTR (Your Membership Number): _____

MEMBER'S NAME - No Business Names, Print Clearly

SPOUSE/CO-MEMBER'S NAME - MUST SHARE SAME ADDRESS

Street Address/PO Box

City State Zip Code (full 9 digits if known) Area Code Phone Number

Email Address: _____

Email Address: _____

Donation to BCHC Education Fund (Tax deductible) _____ Enclosed: \$ Check No.

Parent Unit Membership Types (Check One)

| | | | |
|--|--|---|--|
| <input type="checkbox"/> 1 Year Individual \$50 | <input type="checkbox"/> 1 Year Family \$60 | <input type="checkbox"/> Young Adult (18-25 years old) \$15 | <input type="checkbox"/> Benefactor \$100 |
| <input type="checkbox"/> 2 Year Individual \$90 | <input type="checkbox"/> 2 Year Family \$110 | <input type="checkbox"/> Youth (12-17 years old) \$15* | <input type="checkbox"/> Patron \$250 |
| <input type="checkbox"/> 3 Year Individual \$125 | <input type="checkbox"/> 3 Year Family \$150 | *Youth members MUST fill out BOTH Youth Membership forms (available online) | |
| | | | <input type="checkbox"/> Mt. Whitney \$500 |

Associate Memberships: An Additional \$15 PER UNIT is added to your Parent Unit Dues

Associate Memberships Unit Affiliations MAY NOT BE FOR THE SAME UNIT AS YOUR PARENT UNIT

Associate Membership for: _____ \$15/Unit
Unit Name (from above list)

Associate Membership for: _____ \$15/Unit
Unit Name (from above list)

Add additional choices here

Please clip form along dashed line and keep the below portion for your records.

Parent BCHC Membership Types

Individual, Family, (Shared**), Benefactor, Patron, and Mt. Whitney

A Parent Membership is affiliated with a single Local Unit. BCHC Members may NOT hold more than ONE active Parent Membership.

**A SHARED Membership if for two adults with differing last names who share a common address.

Associate Memberships

These special Memberships are only available to persons already holding Parent BCHC Membership. No one may sign up for an Associate Membership without 1) having registered one of the Parent Membership types, and 2) having selected Parent Unit affiliation.

Youth Memberships

Youth Memberships MUST be accompanied by a signed Youth Membership Permission Release and Youth Parent Permission Form. A Youth Membership is NOT valid until BCHC or the Parent Unit has received signed copies of these forms.

Complete information regarding BCHC Membership is available on the MEMBERSHIP TAB at bchcalifornia.org or call (775) 463-3634

KEEP FOR YOUR RECORDS

I submitted an Application Form for a new -

| | |
|--|-------|
| <input type="checkbox"/> 1 Year Individual | \$50 |
| <input type="checkbox"/> 2 Year Individual | \$90 |
| <input type="checkbox"/> 3 Year Individual | \$125 |
| <input type="checkbox"/> 1 Year Family | \$60 |
| <input type="checkbox"/> 2 Year Family | \$110 |
| <input type="checkbox"/> 3 Year Family | \$150 |
| <input type="checkbox"/> Young Adult (18-25 years old) | \$15 |
| <input type="checkbox"/> Youth (12-17 years old) | \$15* |
| <input type="checkbox"/> Benefactor | \$100 |
| <input type="checkbox"/> Patron | \$250 |
| <input type="checkbox"/> Mt. Whitney | \$500 |

On that form, I also requested:

Associate Memberships

My Total Remittance: \$ _____

My Check Number: _____

Date Mailed: _____

Verification of BCHC Membership

Verification of BCHC Membership is available via:

- 1) BCHC Unit President's reports
- 2) BCHC Membership Chair reports
- 3) a self addressed stamped envelope submitted with this form
- 4) a valid email address



Big Meadows Horse Camp Sponsors



Your unit pays the cost of maintaining and hosting the Big Meadows horse camp. We are seeking sponsors (10) in total that will be exclusive to the Business/Industry type. Sponsorships are \$500 each per calendar year. Sponsors will be advertised on our web page, our facebook page, at the camp, and in our monthly newsletter. Please show your support to these sponsors. If you or someone you know would like to be a sponsor please contact Joe Kaminski at (559) 909-0505. If interested in being a camp host for this season, contact Jim Knabke at (559) 779-4715.






www.
visaliaidea.com

1921 E. Main St.
Visalia, CA 93292

PH 559-733-4149
FAX 559-636-3690



IDEA!
PRINTING & GRAPHICS INC.

orders@visaliaidea.com



*Now with
Two Locations
to Serve Our Community*

*Locally Owned and Owner Operated
Serving Tulare, Fresno and Kings Counties for Generations*

Salser & Dillard Funeral Chapel - FD 1781
127 E. Caldwell Ave, Visalia CA 93277
PHN: 559.635.1144

Salser & Dillard Creighton Chapel - FD 497
1588 Lincoln Street, Kingsburg CA 93631
PHN: 559.897.2908

www.salseranddillard.com

Dr. Karl J Pendegraft, DDS
5415 w hillsdale vis 93291
559-733-1097

JOYCE AND MIC

**The Pendegraft
Family**

**Cathie Walker
Riddle Ranch**

Available



**Tulare County
Sheriff's
Posse**



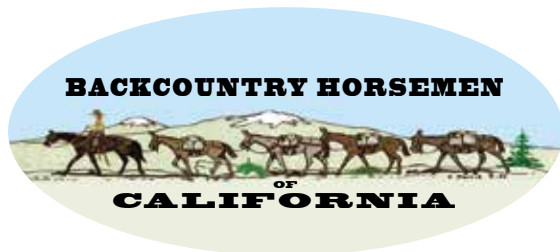
**The ONLY Funeral
Home with a
Mounted Honor Guard**
Creating a meaningful tribute
for all who have served

www.salseranddillard.com

Salser & Dillard Funeral Chapel - FD 1781
127 E. Caldwell Ave, Visalia CA 93277
PHN: 559.635.1144

Salser & Dillard Creighton Chapel - FD 497
1588 Lincoln Street, Kingsburg CA 93631
PHN: 559.897.2908

Available



San Joaquin Sierra Unit

**P.O. Box 25693
Fresno, CA 93729-5693**

Objectives & Purpose of the Backcountry Horseman of California *From the BCHC Bylaws*

- To improve and promote the use, care and development of California backcountry trails, campsites, streams and meadows; to advocate good trail manners.
- To promote the conservation and utilization of our backcountry resources in concert with livestock transportation.
- To keep the backcountry trails and forage areas open to horseman on all public lands.
- To keep current information before the Corporation membership and its local Units regarding new legis-lation or management plans related to government regulations of the backcountry.
- To support or oppose new proposals, plans and restrictions as related to the interest of horsemen and those persons interested in recreational stock use and enjoying the backcountry.
- To promote the interest of people who, due to health or physical factors, need transportation other than by foot on backcountry trails.
- To promote public awareness and interest in the historical aspect of horsemen and stock in the back-country and to help educate backcountry users on the ways to use the trail and foraged in a manner that conserves the backcountry resources.
- To assist in keeping the public informed of the vital need for a clean backcountry.
- To promote a working relationship with and keep the work and interests of the Corporation before our local, state and federal officials.
- To assist in the formation and continuation of local Units to carry out these purposes.